



ATTERBURY-MUSCATATUCK

2025-2026 Hunting, Fishing and Trapping Guide



**HUNT
CAMP
ATTERBURY**
OUTDOOR ACTIVITIES ABOUND

INSIDE:

- **Important Updates**
- **Hunting Dates**
- **Lottery Opportunities**
- **iSportsman Permits**
- **Hunt Policies**
- **Volunteer Opportunities**
- **Management Goals**
- **Contact Information**

Featured Items



Deer Hunting

Pages 21-35



Turkey Hunting

Pages 43-45



Small Game/Bird Hunting

Page 47-49



Fishing

Page 52-53

Table Of Contents

The pursuit of game leads us to the appreciation of the beauty and complexity of our natural world.

Cameron Hanes

Inside

Contacts.....	4	Volunteer Appreciation Hunt.....	28-29
Welcome Page.....	5	Invitation Deer Hunt.....	30-31
Updates	6	Reserve Firearms Deer Hunt.....	32-33
Lottery Opportunities.....	7	Muzzleloader Hunt.....	34-35
Hunter Information	8	Whitetail Management.....	36-40
iSportsman.....	9-11	Antler Standards.....	41-42
Permits.....	12-14	Turkey Hunting.....	43-45
Hunt and Season Dates.....	15-16	Mushroom Hunting.....	46
General Rules	17-20	Small Game/Bird Hunting/Trapping.....	47-49
Deer Hunting Guidelines.....	21-23	Trapping.....	50
Archery Deer Hunting.....	24-25	Waterfowl Hunting.....	51
Youth Firearms Deer Hunt.....	26-27	Fishing.....	52-53

ATTERBURY-MUSCATATUCK

2025-2026 Hunting, Fishing and Trapping Guide

Command Team

And

Contacts



Indiana Army National Guard
Camp Atterbury

Post Commander

COL James Babbitt



Indiana Army National Guard
Camp Atterbury

Post CSM

CSM Josh Butler



Indiana Army National Guard
Camp Atterbury

INNG Hunting Board Director

LTC Stephen Spencer

Contacts.....

Atterbury Range Control	812-526-1351
Atterbury Main Gate	812-526-1109
Atterbury Lodging	812-526-1128
Atterbury Post Locator	812-526-1499

Hunt Board Email Address

ng.in.inarng.mbx.hunting-program@army.mil

***Through almost all of
human existence, huntable
land and huntable wildlife
have preceded the hunter.
They caused the hunter.
But in the future this must
be reversed. It is the hunter
who must cause huntable
land and wildlife, and a
world worth being young in.***

- John Madison,

Welcome Letter from The Hunt Board Director

Welcome to the 2025-2026 Hunting, Trapping and Outdoor recreational season. A special thanks to all of you that volunteer. Without you, much of what we do is not possible. You assist wounded veterans, youth and afford others the opportunity to build memories of Camp Atterbury and the outdoors. Your contributions are appreciated.

The Indiana National Guard Hunting Board recently updated our charter, and I wanted to share the goals of the program with you.

- Ensure safety is integrated and maintained in all hunting, fishing, and trapping Activities.
- Provide no/low-cost hunting, fishing, and trapping opportunities to youth and wounded veterans.
- Provide hunting opportunities for the military, retired military, INNG employees, and the general public.
- Partner/coordinate with the Indiana Department of Natural Resources to achieve mutual goals.
- Monitor/manage game species for sustainable harvest, desired population dynamics and prevention of natural habitat degradation.
- Maximize recreational opportunities without compromising military training.

These goals guide the decisions the Board makes. Our charter also defines how we conduct business, the roles of the various Hunt Board members and policy enforcement.

Along with the charter is the publication of CA REG 210-1, this regulation is published and updated every three years. This regulation outlines the rules and policies governing every facet of recreational activities. Safety, access, rules of the various hunting, fishing and trapping seasons along with penalties for violations and the appeals process.

The Guide serves as the user-friendly version that provides general information from both the Hunt Board Charter and CA REG 210-1. The Guide is published annually and contains updated information. One of the primary missions over the last few years has been to increase transparency. It is my hope that these three documents do just that, by being transparent on our goals and how we as a Hunt Board do business.

The hunt board appreciates your feedback, and we continuously strive to improve our processes. I would like to thank everyone that participated in outdoor activities this past season and look forward to spending time with you all this next year.

Best of luck,

LTC Spencer

Important Updates and Information

iSportsman

The sponsoring hunter will acquire the youth hunter's 2025 Youth Firearm Permit, check-in, checkout, and record the harvest in the iSportsman system. Youth hunter's will be checked in under the sponsoring hunter's iSportsman account as a guest utilizing name and birthdate.

When to Check-in/Check-out of Your Recreation Area Within iSportsman

You must check-in to your recreation area within iSportsman before driving down range. This means you may not be South of County Line Road, West of Schoolhouse Road, East of Mauxferry Road or North of Hospital Road, for the purpose of recreation on Camp Atterbury property, without first checking into the area you plan to recreate in first.

Your final check-out for the day (i.e., intend to leave the installation) must not occur until you are back on main post (cantonment). You may check-out while down range only if you are immediately checking into a new training area for recreational activities. However, your final check-out for the day must occur when you are clear of downrange. Down-range is defined as being South of County Line Road, West of Schoolhouse Road, East of Mauxferry Road or North of Hospital Road on Camp Atterbury property, for the purpose of recreation.

These procedures are what make it possible to eliminate stopping at Range Control for a vehicle pass. Failure to comply with these check-in and check-out procedures will result in penalties IAW CA 210-1.

Trapping

Trappers will check into Training Area 802 only and must submit a map of their trap locations to the hunting program email. This was decided as a way to make it easier for trappers instead of having to constantly checking in and out of numerous locations especially since their traps are generally right off the road.

Dates for use of Dogs

Squirrel and Raccoon: Dec. 16, 2025– Jan. 31, 2026

Rabbit: Dec. 16, 2025- Feb. 28, 2026

Running Season: Dec. 16, 2025– Apr. 15, 2026

Parking Pass (No Stop At Range Control)

Recreationists must print your account validations/permits page from iSportsman and display on the dash of your vehicle. This will serve as your parking pass and must be visible to Range Control and law enforcement personnel. Failure to display your pass will result in disciplinary action.

No requirement to stop at Range Control.

Failure to check-in or check-out of iSportsman will result in penalties to privileges IAW CA 210-1.

Understand that, with this privilege, it is the recreationists responsibility to "remember" to sign in and out correctly. There will be no exceptions to disciplinary action on this requirement.

Equipment Tagging Requirements

All tree stands, blinds, trail cameras and other equipment used on Camp Atterbury must be tagged, using a weather proof method, with your **assigned iSportsman permit number**.

ID Registration

All recreationalist that do not possess a Common Access Card (CAC) must have a **REAL ID** registered with the front gate to access the Installation. This will include our iSportsman users. Users can register their **REAL ID** at the Welcome Center Monday-Thursday 0900-1200 or at the Front Gate Building 438 Monday-Friday 1200-2200

Firearms Hunts

Legal equipment for firearms deer hunts on Camp Atterbury will be shotguns, muzzleloaders and rifles authorized on Indiana public lands. **Hand guns are not authorized** for hunting on Camp Atterbury. Muzzleloaders and rifles must meet requirements as stated in the Indiana Hunting and Trapping Regulations.

Lotteries

Atterbury-Muscatatuck utilizes the iSportsman lottery system to select participants for special draw hunts, and allow members of the public the opportunity to hunt on the Installation. Lotteries allow us to reduce the administrative workload of the hunting program by eliminating the need for applications to be submitted, verified, and selected. All participants wishing to enter for these special hunts must acquire the hunt specific lottery entry permit. **Participants must be at least 18 years old to enter an Atterbury-Muscatatuck iSportsman lottery.** After the lottery period has ended, iSportsman will conduct a random drawing and notify winners via email. Drawn hunters will then need to complete the iSportsman account validation process and acquire the permits for their hunt.

Additional lottery information can be found on the Lottery Information Page, <https://atterbury.isportsman.net/Lottery.aspx>.

Lottery Groups

The use of the lottery system has eliminated the option to bring a guest on special draw hunts. Instead, **ALL HUNTERS** must enter the lottery. Those that do wish to hunt with another participant may enter the lottery as a group entry. This will ensure that if one participant is selected the other will be drawn as well. Groups can consist of no more than two (2) participants.

To enter as a group, the first member of the group will select the "Create a group entry" option when purchasing his/her lottery entry and receive a unique key code at checkout for the group. The second hunter in the group will select "Join an existing group" when purchasing their lottery entry and use that key code to link the two hunters together. If the group includes an Authorized User, they should always be the individual creating the Group ID. **Each lottery entry will generate a unique group entry code. Make sure you are entering the correct key code for the lottery, or your applications will not be joined together.** Lottery selections are specific to the hunter(s) that entered. Winning permits cannot be transferred to a different hunter.

How to apply

Any hunter that would like to enter an Atterbury-Muscatatuck lottery needs to follow the following steps:

1. Go to the Camp Atterbury iSportsman web site at <https://atterbury.isportsman.net/>.
2. New Users will create their account (**Returning users will login to their existing account**).
3. Go to the lottery tab at the top of the page.
4. Purchase a lottery chance.
5. If drawn, complete your validation process if needed and acquire your winning permits. Permit fees will apply.

2025-2026 Lottery Opportunities

Public Deer Archery Lottery (Open to public hunters only)

Grants chosen public hunters access to archery deer hunt during the 2025 Camp Atterbury season.

Lottery Open: 01 JUL – 31 AUG 2025

Number of Slots: 65

Hunt Dates: 01 OCT – 12 DEC 2025

INNG Invitation Public Lottery (Firearm Hunt) (Open to public hunters only)

Grants chosen public hunters access to participate in the 2025 INNG Invitation Hunt.

Lottery Dates: 01 AUG – 30 SEP 2025

Number of Slots: 60

Hunt Dates: 7-8 NOV 2025

Reservation Firearm Lottery (Firearm Hunt) (All hunters must apply)

Grants chosen hunters access to participate in the 2025 Reservation Firearm Hunt.

Lottery Dates: 01 AUG – 30 SEP 2025

Number of Slots: 200 public, 250 authorized users

Hunt Dates: 29-30 NOV 2025

Muzzleloader Lottery (Firearm Hunt) (All hunters must apply)

Grants chosen hunters access to participate in the 2025 Muzzleloader Hunt.

Lottery Dates: 01 AUG – 30 SEP 2025

Number of Slots: 50 public, 100 authorized users

Hunt Dates: 13 – 14 DEC 2025

Public Spring Turkey Hunt Lottery (Open to public hunters only)

Grants chosen hunters access to participate in the 2026 Spring Turkey Hunt on Camp Atterbury.

Lottery Dates: 15 FEB – 31 MAR 2026

Number of Slots: 10

Hunt Dates: 22 APR – 10 MAY 2026*

***Dates subject to change.**

Personnel Authorized To Hunt On Camp Atterbury

- **Military Personnel:** Military personnel currently serving in the INNG or other services across the nation who carry a current military ID.
- **Retired Military Personnel:** Retired military members from the INNG or other services who carry a current military retiree ID.
- **State Employees:** INNG State Employees who carry the Adjutant General's Office state ID.
- **Command Directed Personnel:** Personnel authorized by the Command Staff of the INNG and with appropriate documentation stating such.
- **Civilian Contracted Employees of Camp Atterbury or MuTC:** Personnel who have full time employment as a contractor of Camp Atterbury or MuTC.

Personnel NOT Authorized To Hunt On Camp Atterbury

- Family, friends or acquaintances of an authorized hunter, **unless accompanied as the guest of an authorized hunter.**
- Persons that do not meet one of the definitions of Personnel Authorized to hunt on Camp Atterbury.
- Those not legally allowed to possess or be in the presence of firearms due to felony status or firearm violations.
- Those with active or pending fish & game law violations.

Guests hunting with an Authorized Hunter

Guest: An individual that is hunting with an authorized hunter who has met all the requirements to hunt on post.

Authorized Hunters are allowed to bring guests for archery deer hunting, turkey hunting, small game/bird hunting, waterfowl, trapping, foraging, general recreation, and fishing activities. Guest limits/restrictions vary by season, so ensure you read the section pertaining to the game you are hunting.

Authorized Hunters are responsible for ensuring their guests know the rules and policies for Camp Atterbury. The authorized hunter will ultimately be held accountable for guest policy violations (this includes antler standards).

All guests participating in a hunt must create an iSportsman account and purchase a permit prior to hunting on Camp Atterbury. The process is the same as for an authorized hunter and requires validation of the account by INNG personnel. This may take 2-3 business days. **It is imperative to plan ahead and establish the user account prior to the hunt day. There will be no account validations outside of normal business hours; 0800-1500 hrs M-F.**

Guests will follow the same check-in procedures via iSportsman as authorized hunters. However, guests are not authorized to check-in without their sponsoring authorized hunter.

Guests are not allowed to hunt alone. An authorized hunter may not sign a guest in and then let them hunt while the associated authorized hunter is not hunting.

Guests must sign-out when the authorized hunter signs-out. **Guests can not sign-out prior** to or after the authorized hunter.

Guests must provide a cell phone number during their iSportsman user registration, they must carry and respond to calls or text messages from Range Control using the phone number provided.

Camp Atterbury iSportsman

iSportsman is the online platform Atterbury-Muscatatuck has implemented for all down range outdoor recreation activities on post. The iSportsman platform will be used for purchasing permits, checking in and out of Atterbury-Muscatatuck training areas, and recording game harvested. **All participants are required to create an iSportsman account prior to participating in activities on Atterbury-Muscatatuck.** Accounts will be created through Atterbury-Muscatatuck's iSportsman website, <https://atterbury.isportsman.net>. Online guides and additional general user information is available under the info tab of the Atterbury-Muscatatuck iSportsman webpage.

This system is being implemented to reduce the administrative burden of the hunting & fishing program on both the user and the installation. Some expected benefits of this system include:

- Flexibility to attend required safety briefings at the users convenience.
- Improved awareness of area availability through a real time interactive map illustrating available training areas 24/7.
- Improved access to information— policies, maps, season dates, etc. is available on Camp Atterbury's iSportsman website.
- Increased safety— in any kind of emergency situation Range Control will be able to contact specific hunters or groups of hunters via cell phone with warnings or instructions as needed.
- Increased wildlife/habitat management — any funds in excess of those required to cover operating costs are available for fish/wildlife projects.

All hunting, fishing, and trapping fees collected go into a Camp Atterbury specific Army Fish and Wildlife Conservation Fund Account. These funds are limited to use for various aspects of fish and wildlife management. This account is unique in that all of the funds collected at the installation, stay at the installation. This means that your permit fees will stay local and be applied to the programs in which you participate. We continue to believe this system will help make the hunting and fishing experience at Atterbury-Muscatatuck a more enjoyable experience.

Becoming a Validated Participant

Becoming a validated hunting or fishing participant on Atterbury-Muscatatuck is a multi-step process consisting of: 1) creating an iSportsman account; 2) providing documentation that validates your eligibility to hunt and fish on Atterbury-Muscatatuck; 3) verifying completion of a state-sponsored Hunter Safety/Hunter's Education course 4) completing an online Atterbury-Muscatatuck safety brief; 5) acknowledging a hold harmless waiver; and, 6) purchasing the appropriate Atterbury-Muscatatuck permits. After completing all of these steps, you will be eligible to hunt, fish, and trap on Atterbury-Muscatatuck in accordance with all applicable regulations and policies.

Hunter Education Requirement

You must have completed a state-sponsored hunter education course and possess a hunter education card to be authorized to hunt on Atterbury-Muscatatuck. This is a firm requirement. No one is grandfathered. No exceptions. Your hunter's education number and issuing authority must be provided during the iSportsman account validation process. This will require validation by INNG personnel prior to being granted access to the installation or the ability to purchase hunting permits. You must be able to produce proof of meeting the hunter's education requirement anytime you are engaged in hunting/trapping activities on post. Hunter's that have lost their card can often request a replacement through <https://www.ilostmycard.com>.

New Authorized User Validation

All users must have their identification verified prior to purchasing permits through the iSportsman portal. All Authorized Users are required to provide proof of their applicable ID. ID requirement's will vary depending on customer class.

- Current Military Personnel – Valid military ID
- Retired Military Personnel – Military Retiree ID (VA cards do not qualify)
- State Employee/Contractor – CAC or AGO state ID
- Command Directed – Verified against command directed list

ID validation can be done in one of two ways.

Option 1: ID validation can be done by bringing the required ID and hunter's education documentation to the Environmental Management Division office, Building 241, Monday - Friday 08:00 - 15:00.

Option 2: ID validation can be done remotely by e-mailing your iSportsman username and a picture/copy of your required ID and hunter education documentation. Current military personnel and AGO employees can send the email from your military email address to act as your ID validation in lieu of sending a picture/copy of your ID card. Send emails with the subject heading "iSportsman Authorized User Validation" to, ng.in.inarng.mbx.hunting-program@army.mil.

Please allow 2-3 business days for processing of any remote validation requests .

Guest Validation

Guests of Authorized Users are also required to create an iSportsman account, go through the validation process and purchase appropriate permits for their activity. Validation for guests of Authorized Users also have two options.

Option 1: Validation can be done in-person by the Sponsoring User (the guest is welcome to attend, but not required) at the Environmental Management Division office, Building 241 Durbin Street, on Camp Atterbury Monday- Friday 08:00 - 15:00. The Sponsor will need to provide the guest's name, iSportsman username and hunter's education documentation.

Option 2: Validation can be done remotely by e-mailing the name, username and hunter education documentation from the Sponsor's e-mail account. Sponsoring User's **MUST** send the email to show the guest is connected to the Sponsoring User. Send emails with the subject heading "iSportsman Guest Validation" to, ng.in.inarng.mbx.hunting-program@army.mil.

Please allow 2-3 business days for processing of any remote validation requests.

Public Hunter Validation

Hunters selected through a Public Draw for any special hunts on Atterbury-Muscatatuck are also required to validate an iSportsman account before being able to buy a permit and attend their hunt event. Validation is **NOT** required unless the hunter is selected for a hunt. Validation can be completed in one of two ways.

Option 1: Validation can be completed by the drawn hunter bringing an ID and hunters education documentation to the Camp Atterbury Environmental Management Division office, Building 241 Durbin Street, on Camp Atterbury Monday - Friday 08:00 -15:00.

Option 2: Validation can be done remotely by the drawn hunter e-mailing their name, iSportsman user name, selected hunt and hunter education documentation with the subject heading "iSportsman Public Validation" to, ng.in.inarng.mbx.hunting-program@army.mil.

Please allow 2-3 business days for processing of any remote validation requests.

ID Registration

All visitors that do not possess a Common Access Card (CAC) must have their **REAL ID** registered with the front gate to access the Installation. This will include our iSportsman users. Users can register their **REAL ID** at the Welcome Center Monday-Thursday 0900-1200 or at the Front Gate Building 438 Monday-Friday 1200-2200.

Returning Users

All users that have already established an iSportsman account must re-validate their account annually on or after 01 JUN by providing proof of their applicable ID. This includes one of the following, current military ID, AGO ID, or state issued ID. Retired military must revalidate but **do not** need to provide proof of their retiree ID card. **Returning users do not need to provide proof of hunter's education after their initial validation.** ID validation can be done in one of two ways.

Option 1: ID validation can be done by bringing the required ID to the Environmental Management Division office, Building 241, Monday - Friday 08:00 - 15:00.

Option 2: ID validation can be done remotely by e-mailing your iSportsman username and a picture/copy of your required ID. Current military personnel and AGO employees can send the email from your military email address to act as your ID validation in lieu of sending a picture/copy of your ID card. Send emails with the subject heading "iSportsman Returning User Validation" to, ng.in.inarnng.mbx.hunting-program@army.mil.

Please allow 2-3 business days for processing of any remote validation requests.

Returning users **MUST** ensure that their personal information (address, phone number, vehicle/plate information, etc.) is correct in the iSportsman system. Failure to provide accurate iSportsman information could result in a loss of privileges IAW CA 210-1.

Hunt Brief Validations

All participants must complete the online hunt brief(s) annually prior to recreating at Atterbury-Muscatatuck. This validation must be updated annually on or after 01 June.

Atterbury-Muscatatuck briefs can be found on the Atterbury-Muscatatuck iSportsman page, <https://atterbury.isportsman.net>, under the "My Safety Briefs Tab".

Users are required to watch the video and then complete the knowledge check at the end to acquire your brief validation. The briefs you will need to complete will be dependent upon the activities you wish to participate in.

HUNT BRIEF: Hunting Permits, Trapping Permits, Bundle Permit

SPRING TURKEY BRIEF: Spring Turkey Permits

GENERAL RECREATION BRIEF: Fishing Permits, Foraging Permits, General Recreation Permits, Bundle Permit

FIREWOOD BRIEF: Cut-Your-Own Firewood Permits

Validation Period

All validations are good for the entire season. The Atterbury-Muscatatuck iSportsman season runs from 01 JUN—31 MAY. Once your account is validated for one event you are validated for all other relevant events. For example, if you were validated for archery hunting and are later selected for a firearm hunt during the same season you will not need to provide your validation information a second time.

Atterbury-Muscatatuck Permits

Once all validations have been received, participants must purchase the proper permits before engaging in any activities on Atterbury-Muscatatuck. Only permits that the individual is eligible to purchase will appear on the account. If you do not see the permit you are trying to acquire, verify that you have all required validations. Purchases are completed through iSportsman via Pay.gov using a credit or debit card. We cannot accept cash or check payments. All sales are final, and no refunds will be issued. A "How to" Guide is available under the Info tab on the iSportsman Portal.

Support

For questions or technical issues please contact us via email with the subject heading "iSportsman Help" at ng.in.inarnng.mbx.hunting-program@army.mil or by phone Monday - Friday 08:00 - 15:00 at (812) 526-1375



Permits

ACTIVITY	COST	DESCRIPTION	REQUIRED PERMIT(S)
Access Pass	\$10.00	Required for access to iSportsman portal and to purchase any other permit(s).	2025/2026 Access Pass
Bundle Permit	\$30.00	Available to authorized users. Includes deer archery, small game hunting, furbearer hunting, migratory/game bird hunting, trapping, fishing, foraging, fall turkey hunting, and general recreation activities from the point of purchase until 01 JUN. Does NOT include any deer firearm hunts or spring turkey hunting.	2025/2026 Bundle Permit
Deer Archery	\$20.00	Required for users hunting deer with archery equipment.	2025 Deer Archery Permit
Public Archery Hunt Lottery Entry	\$2.00	Required for general public to enter lottery for public archery access.	2025 Public Archery Lottery Entry
Public Archery Hunt Lottery Winner	\$18.00	Required for drawn public hunters to participate in deer archery season.	2025 Public Archery Winner
INNG Invitation Hunt	\$15.00	Required for chosen hunters to participate in INNG Invitation Hunt at Camp Atterbury.	2025 INNG Invitation Hunt Permit
INNG Invitation Hunt - Public Lottery Entry	\$2.00	Required for general public to enter lottery for INNG Invitation Hunt access.	2025 INNG Public Lottery Entry
INNG Invitation Hunt - Public Lottery Winner	\$13.00	Required for drawn public hunters to participate in INNG Invitation Hunt.	2025 INNG Public Lottery Winner
Reservation Firearm Lottery Entry	\$2.00	Required for users to enter lottery for Reservation Firearm Hunt access.	2025 Reservation Firearm Lottery Entry
Reservation Firearm Hunt	\$13.00	Required for drawn hunters to participate in Reservation Firearm Hunt.	2025 Reservation Firearm Hunt Permit

Permits

ACTIVITY	COST	DESCRIPTION	REQUIRED PERMIT(S)
Muzzleloader Lottery Entry	\$2.00	Required for users to enter lottery for Muzzleloader Hunt access.	2025 Muzzleloader Lottery Entry
Muzzleloader Permit	\$13.00	Required for drawn hunters to participate in Muzzleloader Hunt.	2025 Muzzleloader Permit
Special Youth Firearms Hunt	FREE	Available to sponsors of selected Youth Hunters (17 years of age or less).	2025 Youth Firearm Permit
Youth Spring Turkey Hunt	FREE	Available to sponsors of selected Youth Hunter (17 years of age or less).	2026 Youth Spring Turkey Permit
Wounded Hero Deer Hunt	FREE	Available to selected Wounded Hero Hunters.	2025 Wounded Hero Firearm Permit
Wounded Hero Spring Turkey Hunt	FREE	Available to selected Wounded Hero Hunters.	2026 Wounded Hero Spring Turkey Permit
Small Game	\$10.00	Required for users hunting small game and furbearers.	2025/2026 Small Game Permit
Trapping	\$20.00	Required for users trapping furbearers.	2025/2026 Trapping Permit
Fall Turkey	\$10.00	Required for authorized users for Fall Turkey hunting.	2025 Fall Turkey Permit
Migratory and Game Bird	\$10.00	Required for users hunting game birds (excluding turkey), waterfowl and migratory birds.	2025/2026 Migratory & Game-bird Permit

Permits

ACTIVITY	COST	DESCRIPTION	REQUIRED PERMIT(S)
Foraging	\$10.00	Required for users collecting mushrooms, nuts, berries, and edible plants.	2025/2026 Foraging Permit
Fishing	\$10.00	Required for users fishing on Camp Atterbury.	2025/2026 Fishing Permit
General Recreation	FREE	Required for authorized users participating in general recreation (bird watching, scouting, etc)	2025/2026 General Recreation Permit
Spring Turkey Lottery Entry	\$2.00	Required for public users to enter lottery for Spring Turkey Hunt access.	2026 Spring Turkey Lottery Entry Permit
Spring Turkey Lottery Winner	\$18.00	Required for selected public hunters to participate in Spring Turkey Hunt.	2026 Spring Turkey Lottery Winner Permit
Spring Turkey Hunt	\$20.00	Required for authorized hunters to participate in Spring Turkey Hunting.	2026 Spring Turkey Permit
Firewood (Pre-split)	\$55 per rick	Required for all users purchasing pre-split firewood. Max of 10 ricks per fiscal year. Permit is valid for 30 days. Subject to availability.	Firewood Pre-split Permit
Firewood (Cut Your Own)	\$15 per rick	Required for authorized users harvesting cut and remove firewood from already felled trees. Limit of 15 ricks per fiscal year. Subject to availability.	Firewood Cut Your Own Permit

Deer Hunting Dates

2025 Firearms Deer Hunt Dates

Hunt Name	Hunt Date	Legal Equip	Bag Limit	Restrictions
Special Youth Firearms Hunt	27-28 Sept 2025	Shotguns, muzzleloaders and rifles allowed on Indiana public lands.	1 antlered and 1 antlerless or 2 antlerless	Age 6-17 by application draw
Volunteer Appreciation Hunt	11-12 Oct 2025	Shotguns, muzzleloaders and rifles allowed on Indiana public lands.	5 deer total. Only 1 antlered deer*.	Invitation only. Doe before Buck (you do not get a second buck)
Wounded Hero Hunt	23-26 Oct 2025	Shotguns, muzzleloaders and rifles allowed on Indiana public lands.	1 antlered and 1 antlerless or 2 antlerless	Special Invite Only
Indiana National Guard Invitation Hunt	7-8 Nov 2025	Shotguns, muzzleloaders and rifles allowed on Indiana public lands.	1 antlered and 1 antlerless or 2 antlerless	Special Invite & Public Lottery
Military Reservation Firearms Hunt	29-30 Nov 2025	Shotguns, muzzleloaders and rifles allowed on Indiana public lands.	1 antlered and 1 antlerless or 2 antlerless	Military and Public Lottery
Muzzleloader Hunt	13-14 Dec 2025	Muzzleloading long gun only	1 antlered and 1 antlerless or 2 antlerless	Military and Public Lottery

2025 Archery Deer Hunt Dates

Hunt Name	Hunt Date	Legal Equip	Bag Limit	Restrictions
Public Archery (Lottery Winners)	1 Oct-12 Dec 2025	Archery Equipment (including Crossbow)	4 per season (1 antlered*, 3 antlerless)	Public Lottery
Archery Season	1 Oct-12 Dec 2025	Archery Equipment (including Crossbow)	4 per season (1 antlered*, 3 antlerless)	Authorized hunters, guests and Public Lottery

* See Antlered Deer Standards Policy for antler guidelines/requirements.

More information on specific hunts, including instructions for applying through the Military Application Process, can be found in this booklet. Review the table of contents to locate specific hunt information.

ATTERBURY-MUSCATATUCK

2025-2026 Hunting, Fishing and Trapping Guide

Hunting/Trapping Season Dates

FURBEARERS	HUNTING DATES	TRAPPING DATES
Red & Gray Fox	Oct. 15, 2025 - Feb. 28, 2026	Oct. 15, 2025 - Jan. 31, 2026
Coyote & Striped Skunk	Oct. 15, 2025 - Mar. 15, 2026	Oct. 15, 2024 - March 15, 2026
Raccoon & Opossum	Nov. 8, 2025 - Jan. 31, 2026	Nov. 8, 2025 - Jan. 31, 2026
Dog Running	See page 49 of this guide	----- (no trapping) -----
Beaver	Nov. 15, 2025 - Mar. 15, 2026	Nov. 15, 2025 - Mar. 15, 2026
Mink, Muskrat & Long-Tailed Weasel	Nov. 15, 2025 - Jan. 31, 2026	Nov. 15, 2025 - Jan. 31, 2026
River Otter	----- (no hunting) -----	Nov. 15, 2025 - Mar. 15, 2026*
<p>No furbearer activities will occur on special hunt dates.</p> <p>* There is a seasonal bag limit of 2 river otters per person; there are no daily bag or possession limits for the other species named above.</p> <p>* See Hunting & Trapping Guide for counties open to river otter trapping. Season may close earlier if statewide quota is reached.</p>		

WOODLAND BIG GAME	HUNTING DATES	BAG LIMIT*
Wild Turkey		1 bearded or male turkey per hunter in youth/spring season
Youth	Apr. 19 & 20, 2025	
Spring	Apr. 23 - May 11, 2025 (State Season)	
Fall-Archery*	Oct. 1 - 26, 2025; Dec. 6, 2025 - Jan. 4, 2026	1 bird of either sex per hunter each fall
Fall-Firearm*	Oct. 15 - 26, 2025	

Turkey hunting hours: ½ hour before sunrise to sunset.

* See Hunting and Trapping Guide for counties open to fall turkey hunting. No more than one bird of either sex may be taken in the fall turkey season, regardless of equipment. A separate turkey license is needed for the spring and fall turkey seasons.

WOODLAND SMALL GAME	HUNTING DATES	DAILY LIMIT*
Gray & Fox Squirrel	Sept 1, 2025 - Jan. 31, 2026	5
UPLAND GAME	HUNTING DATES	DAILY LIMIT*
Pheasant (statewide-cock only)	Nov. 1, 2025 - Dec. 15, 2025	2
Quail (North of I-74)**	Nov. 1, 2025 - Dec. 15, 2025	4
Quail (South of I-74)**	Nov. 1, 2025 - Jan. 10, 2026	8
Rabbit	Nov. 1, 2025 - Feb. 28, 2026	5

MISCELLANEOUS GAME	HUNTING/TRAPPING DATES	DAILY LIMIT*
Crow	July 1 - Aug. 15, 2025; Dec. 13, 2025 - Mar. 1, 2026	No limit
Green Frog & Bullfrog	June 15, 2025 - Apr. 30, 2026	25
Eastern Snapping Turtle, Smooth & Spiny Softshell Turtles	July 1, 2025 - Mar. 31, 2026	4***

* The possession limit on pheasants, quail, rabbits, squirrels, frogs, and turtles is two times the daily bag limit.

** Quail bag limits vary on some DNR properties (see Hunting & Trapping Guide).

*** Limit is singly or in aggregate. These species of turtles must have a carapace length of at least 12 inches.

Hunter/Trapper Responsibility

It is your responsibility to know, understand and comply with all Atterbury-Muscatatuck hunting regulations and guidelines. These regulations and guidelines can be found in hard copy format at Range Control, iSportsman and on the Camp Atterbury website:

<https://www.in.gov/indiana-national-guard/visitor-information/hunting-and-fishing-program/>

You must review a safety briefing based on these policies prior to engaging in any hunting, fishing or trapping activities on post.

Firearms Declaration

You must declare your firearm to the security detail at the gate upon entering Camp Atterbury. Your firearm or archery equipment must be in a case. All firearms must be unloaded and ammunition stored separately from the firearm.

iSportsman Registration

All recreationists must register with the iSportsman application and purchase permits at:

<https://atterbury.isportsman.net/>.

Reserving/Checking in to a Hunt Area

After completing the safety briefing, receiving validations for your desired activity and purchasing the proper **state/federal and iSportsman permits/tags**. You may “reserve” a hunt area the day before your hunt. You may also “check-in” to a hunt area the same day of your hunt. Both of those can only be completed through your iSportsman account.

Check-in Required Before Going Down-range

You must check-in to your recreation area within iSportsman before driving down range. This means you may not be South of County Line Road, West of Schoolhouse Road, East of Mauxferry Road or North of Hospital Road, for the purpose of recreation on Camp Atterbury property, without first checking into the area you plan to recreate in first.

Parking Pass

Recreationists must print your account validations/permits page from iSportsman and display on the dash of your vehicle prior to moving down range. The document will serve as your parking pass and must be visible to Range Control and law enforcement personnel. Failure to display your pass will result in disciplinary action.

You Must Hunt Immediately Following Check-in on iSportsman.

For example, you may not check-in and then go to the office to perform official duty prior to hunting (i.e., you cannot sign-in during the morning to “reserve” a spot for afternoon hunting). Check-in must be completed before leaving main post. You are then required to drive directly to the area you check-in to recreate in via the most direct, open route available.

Driving On Camp Atterbury

Hunting from a vehicle on Camp Atterbury is prohibited except in special cases where an authorized hunter or guest is a registered IDNR Handicap permit holder to do so and coordination with Range Control has been completed.

The speed limit on Camp Atterbury is 25 MPH and 15 MPH during limited visibility, unless otherwise posted. Speed limit is 10 MPH when pedestrians are present.

Only hands free cell phone use is authorized while driving.

All firearms and archery equipment must remain in a case and unloaded while traveling in a vehicle on Camp Atterbury. Ammunition is to be stored separately from the firearm.

Traveling to and from your recreation location is the only travel you are authorized to do. You are not authorized to drive around and or take pictures of the installation. Do not drive around any barricades or closed gates.

Driving off an improved road (paved or gravel road) for any reason is strictly prohibited without prior approval from Range Control.

Parking While Hunting/Trapping

You must park on the same side of the road as you are hunting. This is another step to ensure your safety. If lost or hurt, emergency personnel will begin their search on the side of the road the vehicle is parked.

Do not block lanes, fire access points, range gates, trails, or park in a way that impedes traffic.

Checking-out After Hunting

Once your activity is complete and you are back on main-post, check out on iSportsman . If you elect not to use the iSportsman website, you may check-out using the iSportsman kiosk at the Environmental Office (Bldg 241).

Failure to check-out of iSportsman will result in loss of hunting privileges IAW CA 210-1.

Check-in/Check-out Times

Hunters and Trappers may check-in to their hunting areas once the iSportsman system allows for that day. Your required check-out time is provided by the system once you complete check-in. Failure to check-out and be clear of down range by the system provided time will result in penalty IAW CA 210-1.

What To Do If You Are Tracking Wounded Or Downed Game

In some instances hunters/trappers may need additional time to track an animal beyond the mandatory check-out time. In this instance, call Range Control at 812-526-1351 to coordinate further access to the hunting area.

Do not cross into adjacent training areas while tracking game without contacting Range Control at 812-526-1351 to coordinate your movement.

If wounded game enters the Impact Area, contact Range Control at 812-526-1351. In most instances the wounded game will be considered a loss due to the dangers of entering the Impact Area. **YOU ARE NOT** authorized to enter the Impact Area at any time for any reason.

Where To Hunt/Trap On Camp Atterbury

Range Control will determine the authorized hunt areas each day based on available training areas, and retains the authority to close training areas to hunting without advanced notice to promote safety, training, maintenance, deer quota objectives, or other installation needs.

Available areas will be indicated on the iSportsman application.

Hunting in the Impact Area and closed training areas is strictly prohibited. If caught recreating in these areas you will face disciplinary action to include permanent suspension. If applicable, military personnel will be punished IAW UCMJ.

You are only authorized to recreate in the area you selected in iSportsman. You may not check in for one area and then walk into another. Anyone violating this rule can be subject to loss of access privileges.

To change hunting areas while afield, you must first check-out of your existing area in iSportsman then check-in to a new available area. If iSportsman is offline, contact Range Control at 812-526-1351 and request permission prior to moving.

Once the maximum number of hunters has been met for a hunting area, that area will be closed to additional hunters.

When To Hunt/Trap On Camp Atterbury

***Hunting hours and areas are subject to change at any time based on the needs of the installation.**

Most hunting may be allowed 7 days a week. Range Control may shut down hunting completely based on the needs of the installation. For the most up to date hunting times and available areas, check iSportsman or call Range Control at 812-526-1351.

Hunting/Trapping During A Scheduled a Lottery Deer Hunt

You must apply through the lottery system and be selected to hunt during the scheduled special firearms deer hunts. No other hunting activity will be approved during special deer hunting dates. Please see page 8 for scheduled deer hunt dates.

Regulation/Guideline Violations

All personnel failing to follow the rules described in this guide, CA REG 210-1 and referenced policy will be subject to the loss of privileges. Hunters are obligated to report any policy violation to Range Control. Violations of this policy may result in loss of hunting privileges. Military members violating this policy are in violation of Article 92 of the UCMJ and subject to administrative and/or punitive action. Authorized hunters shall ensure their guests understand and adhere to this policy. Authorized Hunters shall be held accountable for their guests' actions to include policy violations and consequences. Any federal or state game law violation, whether on or off post, may result in loss of hunting privileges. Authorized hunters are required to notify the Hunt Program Manager of any wildlife violation off post. Policy violations will be formally reviewed by the Board. Any loss of hunting privileges will be determined by a simple majority vote by the Board. Hunters in violation of this policy will receive written notification from the Board.

Report Violations to Range Control

Hunters who witness a violation of policy are obligated to immediately report it to Range Control. Range Control will handle all violations, it is not the reporting hunters responsibility to stop the violation unless it presents immediate safety risks or concerns.

SEE SOMETHING, SAY SOMETHING!

There is no tolerance for hunters and trappers that violate the Camp Atterbury Hunting policies or IDNR regulations.

Hunter Disputes

Camp Atterbury personnel will seldom get involved in hunter disputes. Do not harass or attempt to correct violators of law or policy. Simply report them to Range Control and continue with your hunt.

Harassment Of Hunters/Trappers

It is illegal to intentionally interfere with the legal taking of a game animal by another person on public land, or on private land without permission of the landowner. This includes trapped animals found prior to the trappers arrival.

Equipment Tagging Requirement

All tree stands, blinds, trail cameras and other equipment used on Camp Atterbury must be tagged, using a weather proof method, with your **assigned iSportsman permit number**. **All tree stands need to be marked at eye level.**

Equipment Theft

It is a violation of state law to take equipment that does not belong to you. If caught tampering with, damaging, or attempting to steal equipment that does not belong to you, prosecution may be sought by the equipment owner and hunting privileges on Camp Atterbury will be revoked.

Use Of Artificial Light/Spotlighting

The use of artificial light is prohibited, except when prior approval is gained through Range Control.

Use Of Motorized Vehicles Or Watercraft

Hunting from a vehicle on Camp Atterbury is prohibited except in special cases where an authorized hunter or guest is a registered IDNR Handicap permit holder. Coordination with Range Control is required prior to arrival onto the installation for a recreational event.

Communication Requirements

All recreational users must carry a working cell phone at all times while on Camp Atterbury. The cell phone number must be in the users iSportsman account profile prior to any hunting/trapping/scouting /recreational activity. Inaccurate information in iSportsman could result in penalty and/or loss of privileges.

Authorized Weapons

Shotguns and rifles (.22 caliber or smaller rim fire only) are authorized for squirrel hunting and trapping without prior approval from Range Control. All other rifle hunting for small game or furbearing animals on Camp Atterbury must have prior approval from the Range Safety Officer. Handguns are not authorized for hunting/trapping on Atterbury-Muscatatuck. Please visit the section in this booklet pertaining to the hunt type you are participating in for legal weapon information.

License Requirements

All hunters and trappers must have a valid hunting license in accordance with Indiana state law. Hunters and trappers should reference the Indiana Hunting and Trapping Guide for specific licensing requirements.

iSportsman Permit Requirements

All Atterbury-Muscatatuck recreationists must register with iSportsman and purchase permits using iSportsman. These are in addition to state/federal license/stamp requirements. See the iSportsman section of this document for more information about permits.

Alcohol Use Prohibited

Any use of alcohol while participating in hunting , fishing, trapping or any other recreational activity down range is strictly prohibited.

Use Of ATV's

The use of ATV's, golf carts, motor bikes or any other off road motorized conveyance is strictly prohibited. You may not bring an ATV on post for use while recreating.

Hunter Orange Requirements

Two (2) pieces of hunter orange must be worn while hunting during any season that requires hunter orange to be worn by state law. **Hunters will wear a minimum of a hat/head cover and vest/coat.** Two gloves or any other combination will not meet the requirements. Two pieces of fluorescent orange must be worn by hunters at all times once they enter the installation main gate. Violators of this policy may be asked to leave immediately.

Use Of Drones

Camp Atterbury prohibits the use of unmanned aerial vehicles (drones). An "unmanned aerial vehicle" means an aircraft that (a) does not carry a human operator, and (b) is capable of flight under remote control or autonomous programming.

Unexploded Ordnance

If you see unexploded ordinance (bombs, ammunition, grenades, etc.) **DO NOT attempt to pick them up.** Use the Atterbury Hazard Tool located at the bottom of the Atterbury iSportsman homepage or do your best to mark your location on the map and immediately report the munition to Range Control (812-526-1351).

Other General Rules

Camp Atterbury enforces all Indiana State Hunting, Fishing and Trapping laws. These additional rules can be found in the Indiana Hunting, Fishing and Trapping guide.

Exceptions To Policy

All exceptions to INNG hunting policies will be routed through the INNG Hunt Board utilizing the contact information on page 4.



Use Of Dogs for Deer Hunting

The use of dogs while hunting deer is forbidden , except when a professional dog handler is requested to assist in the retrieval of wounded game. There must be positive indication that the animal was in fact wounded and the dog must remain leashed and under the control of the handler during the entire recovery process. Range Control must be notified of the use of a dog prior to the dog and handler entering the installation.

Use of Hunting Dogs During Installation Deer Seasons

The use of dogs for small game or furbearer hunting during any deer season on Camp Atterbury is no longer allowed. Due to the volume of deer hunters on the installation, hunting with dogs will begin 15 December and end at the culmination of that small game or furbearer hunting season.

Use Of Baits, Salts, Minerals And Foreign Food Supplies

The use of any bait, mineral, salt or foreign food supply is prohibited on Camp Atterbury. This includes but is not limited to the purpose of trail camera surveys, hunting, or scouting. Baiting is authorized for trapping IAW state laws.

Infrared Sensors/Electronic Calls

The use of infrared sensors or electronic deer calls to locate or take deer is illegal. It is also illegal to hunt or to retrieve deer with the aid of an infrared sensor or to hunt deer while possessing an electronic deer call.

Deer Drives

Driving deer is strictly prohibited. Driving deer is considered the attempt by one or more hunters to intentionally push a deer from one area towards the direction of another hunter in order for that hunter to take the animal.

Hunter Orange

Two (2) pieces of hunter orange must be worn while hunting during any season that requires hunter orange to be worn by state law. Hunters will wear a minimum of a hat/head cover and vest/coat. Two gloves or any other combination will not meet the requirements. Please see the page in this guide that discusses the type of hunt you will be participating in.

An occupied ground blind must display hunter orange of at least 144 square inches on each side so that it is visible from any direction while deer hunting during any deer season in which a hunter is already required to wear hunter orange.

Hunter orange is required on ground blinds constructed of man-made or synthetic materials and placed on or within 4 feet of the ground. The hunter orange must be visible from all directions, and is required on public and private land. A flag placed on top of a blind does not satisfy this hunter orange requirement.

Legal Hunting Hours

Legal hunting hours for all deer seasons are from one-half hour before sunrise to one-half hour after sunset, [unless otherwise indicated by Range Control](#). All hunters must be checked out of iSportsman no later than the time provided by the system during check-in.



Tree stand Rules/Requirements

Tree stands are permitted for use on Camp Atterbury for deer hunting. The following rules must be complied with:

1. Personnel hunting from an elevated tree stand must wear a full body harness system while hunting. This system must prevent individuals from being suspended upside down. A safety belt does **not** meet this requirement.
2. Authorized hunters may leave tree stands on Camp Atterbury beginning 1 September 2025, but stands must be removed no later than 1 March 2026. **Guest hunters must remove their stand at the end of each hunt day. This includes those participating in special hunts.**
3. The use of screw in tree steps, screws or nails is strictly prohibited. If a tree stand is found to have any of these items it will be confiscated by Camp Atterbury Range Control and the owner of the stand (or sponsor of a guest) will lose their hunting privileges on Camp Atterbury.
5. The process for placing tree stands is the same process as checking in to hunt as an authorized hunter. Do not place or retrieve a tree stand or ground blind without checking in on iSportsman and then displaying your vehicle pass.
6. Tree stands must be marked with the hunter's [iSportsman permit number](#) in a weather proof method. All tree stands will be marked at eye level.
7. Tree stands must be from a reputable manufacturer; homemade tree stands are not authorized for use on Camp Atterbury.
8. If tree stands are found on Camp Atterbury out of compliance with this policy, they may be confiscated by Camp Atterbury Range Control.

TREESTAND

Safety



Always wear your full body safety harness with tether attached.



Keep three points of contact when climbing a ladder stand.



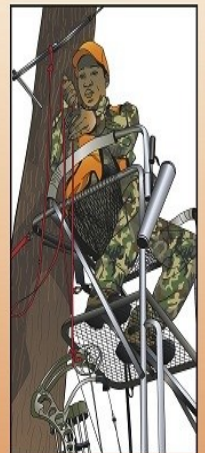
When using a climbing treestand, always stay secured to the tree and use a connector strap.



With hang-on stands, tether should be attached at eye level or above. Climb above and step down onto platform.



Adjust tether so there is no slack when sitting.



Use a haul line to raise and lower equipment.



Poster 3-5



MyFWC.com

Use Of Trail Cameras

Trail Cameras are authorized to be placed on Camp Atterbury, but only in normally open training areas. Trail Cameras must be clearly marked with the hunter's **iSportsman permit number** using a weather proof method. If a trail camera is found to be out of compliance it may be confiscated by Range Control and the owner of the camera (or sponsor if a guest) will lose their hunting privileges on Camp Atterbury. Do not go downrange to install, check or retrieve a camera without signing-in via iSportsman. Trail cameras are authorized to be placed 1 August 2025 and must be removed by 15 May 2026.

Deer Harvest Check In

Prior to deer being removed from the installation, all deer harvested on Camp Atterbury must be:

- Checked at the Camp Atterbury Check Station the day of harvest
- Must be field dressed with no further processing (i.e., not quartered)
- Checked in using the IDNR Check IN Game System
- Checked in using the iSportsman platform (requires IDNR Confirmation Number)

All harvested deer will be brought to the check station field dressed but otherwise intact for gathering of biometric data. Deer will not be quartered or deboned until after clearing the check station.

One Buck Annual Bag Limit

Hunters are only allowed one (1) antlered deer for the entire deer season. This will reduce pressure on bucks and help us meet our management goals.

Daily Bag Limits vs. Season Bag Limits vs. Special Hunt Bag Limits

Daily, Seasonal and Special Hunt bag limits can be found on each hunt type page within this guide. No daily bag limit exists for the regular archery season, provided the hunter stays within the season bag limit of three (3) antlerless and one (1) antlered deer for the season.

Guest Bag Limits

Each guest hunter has an annual guest bag limit of one (1) antlered and three (3) antlerless deer combined for archery deer hunting. Guest bag limits are tracked via iSportsman and the on-post harvest check-in process.

Authorized hunters are responsible to ensure their guests do not exceed their personal bag limit. Bag limit violations committed by guests, may result in loss of hunting privileges for guest and sponsor.

License Requirement

During the regular archery hunting season, hunters may use any license made legal by the rules and regulations set forth in the Indiana Hunting, Fishing and Trapping guide. Special hunts may have restricted hunting license requirements. Please see the hunt type page within this guide that references the hunt you plan to attend.



Authorized Hunters

Current military, retired military, INNG state employees, command directed and civilian contracted employees of Atterbury-Muscatatuck are authorized archery deer hunters. Every authorized hunter must have a validated iSportsman account to participate.

Authorized hunters are allowed one guest per day. Guests must have an iSportsman account see the iSportsman section of this booklet for additional information.

Lottery For Public Archery Hunters

There is a lottery drawing for public archery hunters that can be found at <https://atterbury.isportsman.net/Lottery.aspx>. The lottery will be available from 1 July-31 August 2025. There will be 65 public hunters selected that will be eligible to archery deer hunt on Camp Atterbury from 1 October-12 December 2025. Please review the rest of the guide on deer hunting on Camp Atterbury for more information.

Bag Limits

Authorized archery hunters may take up to four deer during the Camp Atterbury archery season. Only one antlered deer is authorized for the entire deer hunting season on Camp Atterbury, regardless of whether harvested with archery equipment or firearm.

Each authorized hunter has a guest bag limit. Even though an authorized hunter is allowed one guest per day the authorized hunters guests can only harvest a total of four deer and only one antlered deer. For example: an authorized hunter brings a guest and that guest harvested an antlerless deer that would only allow the authorized hunter 3 more deer harvested by **any** guest for the rest of the Camp Atterbury archery deer season.

Hunt Control

All deer hunting events will be controlled through INNG Hunt board members and Range Control. Authorized hunters must understand the following:

- Authorized hunting hours will be 1/2 hour before sunrise to 1/2 hour after sunset. All hunters must clear down range and check-out of iSportsman no later than **1.5 hours** after legal shooting light.
- Only selected training areas not utilized by units for training will be designated for hunting by Range Control only.
- All hunters will check-in and check-out utilizing iSportsman. Range Control can digitally account for all hunters on iSportsman.
- Recreationists must print your account validations/permits page from iSportsman and display on the dash of your vehicle. This will serve as your parking pass and must be visible to Range Control and law enforcement personnel. Failure to display your pass will result in disciplinary action.
- Personnel found hunting outside their designated hunting area will be subject to loss of all hunting privileges on Camp Atterbury.

Check-in and check-out process

Check-in for each day of this hunt will be through iSportsman. Each hunter can reserve their area up to 24 hours prior to the hunt in iSportsman. Vehicle passes can be printed prior to arrival. Hunters must enter Camp Atterbury through the Main Gate. **You must check-in to your recreation area within iSportsman before driving down range.** This means you may not be South of County Line Road, West of Schoolhouse Road, East of Mauxferry Road or North of Hospital Road, for the purpose of recreation on Camp Atterbury property, without first checking into the area you plan to recreate in first. Do not attempt to go down range until 0600. Range Control will be open and available for emergency calls, but there is not a reason to stop and sign out. All hunters must check-out of iSportsman prior to leaving Camp Atterbury by utilizing a cell phone or kiosk.

All deer harvested on Camp Atterbury must be physically inspected and checked in on the same day. Deer will be checked in using the on-line INDNR CheckIN Game System. You will also check your harvest in on iSportsman while at the designated check station on Camp Atterbury for physical examination. **Deer will be field dress but otherwise intact. Deer will not be quartered or deboned until after clearing check station.**

License Requirements

All archery hunters must have a valid hunting license/permit in accordance with Indiana state law. Military Refuge licenses are authorized on Camp Atterbury. Hunters should reference the Indiana Hunting and Trapping Guide for specific licensing requirements. License is the responsibility of the hunter.

Authorized For Archery Deer Hunt:

- Lifetime Comprehensive hunting
- Lifetime Comprehensive hunting/fishing
- Youth License
- Archery Deer License
- Deer License Bundle
- Bonus Antlerless License
- Military/Refuge
- Crossbow license (if using a crossbow)



Legal Equipment

Legal equipment for archery deer hunt on Camp Atterbury will be long bows, compound bows, recurve bows and crossbows. All archery equipment must meet requirements as stated in the Indiana Hunting and Trapping Regulations.

Orange Requirement

Archery deer hunting requires hunter orange as described in the General Deer Hunting Guidelines section of this booklet when it is required in the Indiana hunting and trapping regulation. Please review the Indiana hunting and trapping regulation for guidelines.



Authorized Hunters

Authorized youth hunters, per the Indiana regulations, are youth 17 years of age or younger. All youth hunters participating in the Youth Firearms Deer Hunt must be accompanied by their parent or guardian at all times.

No guests are authorized.

Application Process For Youth Hunters

The application process for youth hunters will be available at [https://www.in.gov/indiana-national-guard/visitor-information/hunting-and-fishing-program/#tab-619506-4-Youth Firearms Hunt](https://www.in.gov/indiana-national-guard/visitor-information/hunting-and-fishing-program/#tab-619506-4-Youth%20Firearms%20Hunt) . Applications must be submitted to ng.in.inarng.mbx.hunting-program@army.mil between 1 August 2025 and 1 September 2025. Please understand the following guidelines when submitting a request:

- A. Each Youth Hunter must have a separate application.
- B. The Sponsor for a Youth Hunter must be an authorized hunter.
- C. Requests may only be submitted by Sponsor of Youth hunter. Each sponsor may only submit 2 youth hunter applications.
- D. Include the name of the youth hunter and the day(s) requesting to hunt.
- E. Include the name and phone number of the youth hunter's parent or guardian.
- F. Military members will email from a military address. If you are retired and emailing from a non-military address you must provide proof of affiliation (Retired ID).
- G. You will be notified by email of your selection to hunt by 20 September 2025.

Hunter Education Exception

Youth hunters are encouraged to have completed the hunter education course, but are authorized to hunt with an apprentice license. The youth hunter's sponsor must have a valid hunter education certification and a validated 2025-2026 Camp Atterbury iSportsman account.

iSportsman

The sponsoring hunter will acquire the youth hunter's 2025 Youth Firearm Permit, check-in, checkout, and record the harvest in the iSportsman system. Youth hunter's will be checked in under the sponsoring hunter's iSportsman account as a guest utilizing name and birthdate.

Bag Limits

Youth hunters may take up to two deer (but no more than one antlered deer) during the special youth hunt. If a youth hunter harvests an antlered deer during the special youth hunt the harvest will count towards their annual Camp Atterbury bag limit. If an antlered deer is harvested with a firearm then no further antlered deer can be harvested by this hunter in any further hunts on Atterbury. Antlered deer harvested on an apprentice license counts against the hunter's state bag limit for antlered deer.

Hunt Control

All firearms deer hunting events will be controlled by INNG Hunting Program board members and Range Control. Authorized hunters must understand the following:

- a. Authorized hunting hours will be briefed by the hunt staff on the morning of the hunt. Range Control will determine the authorized hunt area each day based on available training areas.
- b. Other restrictions and or daily cancellations of hunting are possible if conflicts with training events occur and/or if Range Control personnel are not available to supervise the hunt.
- c. Hunting outside of assigned hunting area is prohibited.

License Requirements

All Youth hunters must have a valid hunting license/permit in accordance with Indiana state law. The license/permit type will be dependent on the date of the hunt. Military Refuge licenses are authorized on Camp Atterbury during any firearms hunt. Hunters should reference the Indiana Hunting and Trapping Guide for specific licensing requirements. License is the responsibility of the Sponsor and hunter and confirmation of the possession of a valid license will be conducted the morning of the hunt prior to release to a hunt area.

Authorized For Youth Firearms Hunt:

- Apprentice License
- Youth License
- Deer License Bundle
- Bonus Antlerless License
- Military/Refuge

Legal Equipment

Legal equipment for youth firearms deer hunts on Camp Atterbury will be shotguns, muzzleloaders and rifles authorized on Indiana public lands. **Hand guns are not authorized** for hunting on Camp Atterbury. **Archery equipment is authorized** for youth hunters during this special hunt. Muzzleloaders and rifles must meet requirements as stated in the Indiana Hunting and Trapping Regulations.

Adults accompanying youth hunters must not possess a firearm, bow and arrow, or crossbow while in the field, and must possess a valid hunting license.

Orange Requirement

This hunt requires hunter orange as described in the General Deer Hunting Guidelines section of this booklet. This includes Sponsors, parents and guardians.



iSportsman Requirement

This hunt requires all hunters to have a current valid iSportsman account and acquire the complimentary permit for this event. Please see the iSportsman section of this booklet for additional information on these processes.

Authorized Hunters

Only persons who have been officially selected and notified are authorized to participate. Personnel that volunteered to assist the hunt program during the 2024 hunt season are eligible. Notification will be provided through the email address that was provided on the volunteer form completed in 2024.

Hunt Dates

11-12 October, 2025

Check-in for each day of this hunt will be through iSportsman, utilizing a cell phone or a kiosk. Each hunter can reserve their area 24 hours prior to the hunt in iSportsman. Vehicle passes can be printed prior to arrival. Down range gates will open at 0600. **You must check-in to your recreation area within iSportsman before driving down range.** This means you may not be South of County Line Road, West of Schoolhouse Road, East of Mauxferry Road or North of Hospital Road, for the purpose of recreation on Camp Atterbury property, without first checking into the area you plan to recreate in first. Hunters must enter Camp Atterbury through the Main Gate. Do not attempt to go down range until 0600. Range Control will be open and available for emergency calls, but there is not a reason to stop and sign out.

No guests are authorized during this hunt. Only hunters that receive an invitation are authorized to attend.



Bag Limits

Volunteer Appreciation deer hunt bag limit is authorized per the guidelines listed below:

- a. The bag limit is five deer for this hunt. One antlered deer and 4 MATURE antlerless deer (avoid fawns).
- b. A hunter MUST harvest a 1.5 year old or older antlerless deer before harvesting an antlered deer. Any antlered deer harvested during this hunt will count towards the hunters one antlered deer for the entire deer hunting season on Camp Atterbury.
- c. Once a hunter harvests a 1.5 year old or older antlerless deer the hunter MUST check the deer on-line using the CheckIN Game System before attempting to harvest an antlered deer. The hunter will provide the confirmation number at the Camp Atterbury check station before leaving Camp Atterbury. The CheckIN Game System will confirm the hunter harvested a MATURE antlerless deer before harvesting an antlered deer. A hunter does not need to take the antlerless deer to the Camp Atterbury check station to continue hunting, but must do so before leaving the installation.
- d. **All deer harvested on Camp Atterbury must be physically inspected and checked in** on the same day. Deer will be checked in using the on-line CheckIN Game System and at the designated check station on Camp Atterbury. Deer should be field dressed and must be whole (ie., not quartered).

Hunt Control

All deer hunting events will be controlled through INNG Hunt board members and Range Control. Authorized hunters must understand the following:

- a. Authorized hunting hours will be 1/2 hour before sunrise to 1/2 hour after sunset. All hunters must clear down range and check-out of iSportsman no later than **1.5 hours** after legal shooting light.
- b. Only selected training areas not utilized by units for training will be designated for hunting by Range Control only..
- c. All hunters will sign-in and sign-out utilizing iSportsman.

Range Control can digitally account for all hunters on iSportsman.

d. All hunters will print off a vehicle pass prior to going down range. Any vehicle without a vehicle pass in the front drivers side window will be subject to the hunter losing all hunting privileges.

e. Personnel found hunting outside their designated hunting area will be subject to loss of all hunting privileges on Camp Atterbury.

License Requirements

All hunters must have a valid hunting license/permit in accordance with Indiana state law. The license/permit type will be dependent on the date of the hunt. Military Refuge licenses are authorized on Camp Atterbury during any reserve hunt. Hunters should reference the Indiana Hunting and Trapping Guide for specific licensing requirements.

Authorized For Volunteer Appreciation Hunt:

- Lifetime Comprehensive Hunting License
- Lifetime Comprehensive Hunting/Fishing License
- Military Refuge

Legal Equipment

Legal equipment for firearms deer hunts on Camp Atterbury will be shotguns, muzzleloaders and rifles authorized on Indiana public lands. **Hand guns are not authorized** for hunting on Camp Atterbury. Muzzleloaders and rifles must meet requirements as stated in the Indiana Hunting and Trapping Regulations.

Orange Requirement

This hunt requires hunter orange as described in the General Deer Hunting Guidelines section of this booklet.

ISportsman Requirement

This hunt requires all hunters to register and purchase a permit as described in the iSportsman and General Deer Hunting Guidelines sections of this booklet.

Authorized Hunters

Only persons who have received an official invitation are authorized to attend.

Bag Limits

The 2025 firearms deer season bag limit is authorized per the guidelines listed below:

- a. The bag limit for authorized hunters is two deer per hunt, but no more than one antlered deer for the entire deer season.
- b. **All deer harvested on Camp Atterbury must be physically inspected and checked** in on the same day the deer is harvested. Deer will be checked in on-line using the CheckIN Game System. Deer will also be checked in at the check station on Camp Atterbury. Deer check-in procedures will be defined on the morning of the hunt during the hunt safety briefing.

Lottery

Public hunters can apply for this hunt utilizing the iSportsman lottery system. Details can be found on the Camp Atterbury iSportsman website at:

<https://atterbury.isportsman.net/Lottery.aspx>

Hunters receiving an invitation do not need to apply through the lottery system.

Hunt Control

All firearms deer hunting events will be controlled through INNG Hunt board members and Range Control. Authorized hunters should understand the following:

- a. Authorized hunting hours will be briefed by the hunt staff on the morning of the hunt. Range Control will determine the authorized hunt areas each day based on available training areas.
- b. Only selected training areas not utilized by units for training will be designated for hunting.
- c. Designated areas for hunting will be identified by Range Control only.
- d. All hunters will be advised of the available hunting areas on the Area Status Map under the maps tab in the iSportsman portal.
- e. Personnel found hunting outside the designated hunting areas will be subject to loss of all hunting privileges on Camp Atterbury.

Hunt Dates

7-8 November 2025

This two day hunt will be conducted using our ZONE format. Expect to be hunting in a group with a ZONE Leader assisting and coordinating your group's hunt concept. **Arrive no earlier than 8 am on 7 NOV and no earlier than 5 am on 8 Nov.** The hunt is a two day hunt. The zone leader will provide details. Hunters must be cleared through the check point / station no later than one hour after legal shooting light on both days of the hunt .

Legal Equipment

Legal equipment for firearms deer hunts on Camp Atterbury will be shotguns, muzzleloaders and rifles authorized on Indiana public lands. **Hand guns are not authorized** for hunting on Camp Atterbury. Muzzleloaders and rifles must meet requirements as stated in the Indiana Hunting and Trapping Regulations.

Orange Requirement

This hunt requires hunter orange as described in the General Deer Hunting Guidelines section of this booklet.

Zone Leader Contact

Every hunter receiving an invitation to the INNG Invitation Deer Hunt will link-up with their respective zone leader of the zone they have reserved the morning of the first day of the hunt. The zone leader will have specific information pertaining to the hunt and will be the point of contact for any questions pertaining to the hunt. Changing hunt zones during this hunt is not authorized.

License Requirements

All hunters must possess a valid hunting license in accordance with Indiana state law when the hunter arrives for the hunt. Military Refuge licenses are authorized on Camp Atterbury during any firearms hunt. Hunters should reference the Indiana Hunting and Trapping Guide for specific licensing requirements. Confirmation of possession of an authorized license will be during the morning hunt safety briefing by the zone leaders.

Authorized For Reserve Firearms Hunt:

- Lifetime Comprehensive Hunting License
- Lifetime Comprehensive Hunting/Fishing License
- Military Refuge



iSportsman Requirement

This hunt requires all hunters to register and purchase a permit as described in the General Deer Hunting Guidelines section of this booklet.

Authorized Hunters

Only persons who have been officially selected and notified through the lottery are an authorized hunter for this event.

Lottery

All hunters must apply for this hunt utilizing the iSportsman lottery system. Details can be found on the Camp Atterbury iSportsman website at:

<https://atterbury.isportsman.net/Lottery.aspx>

Hunt Dates

29- 30 November 2025

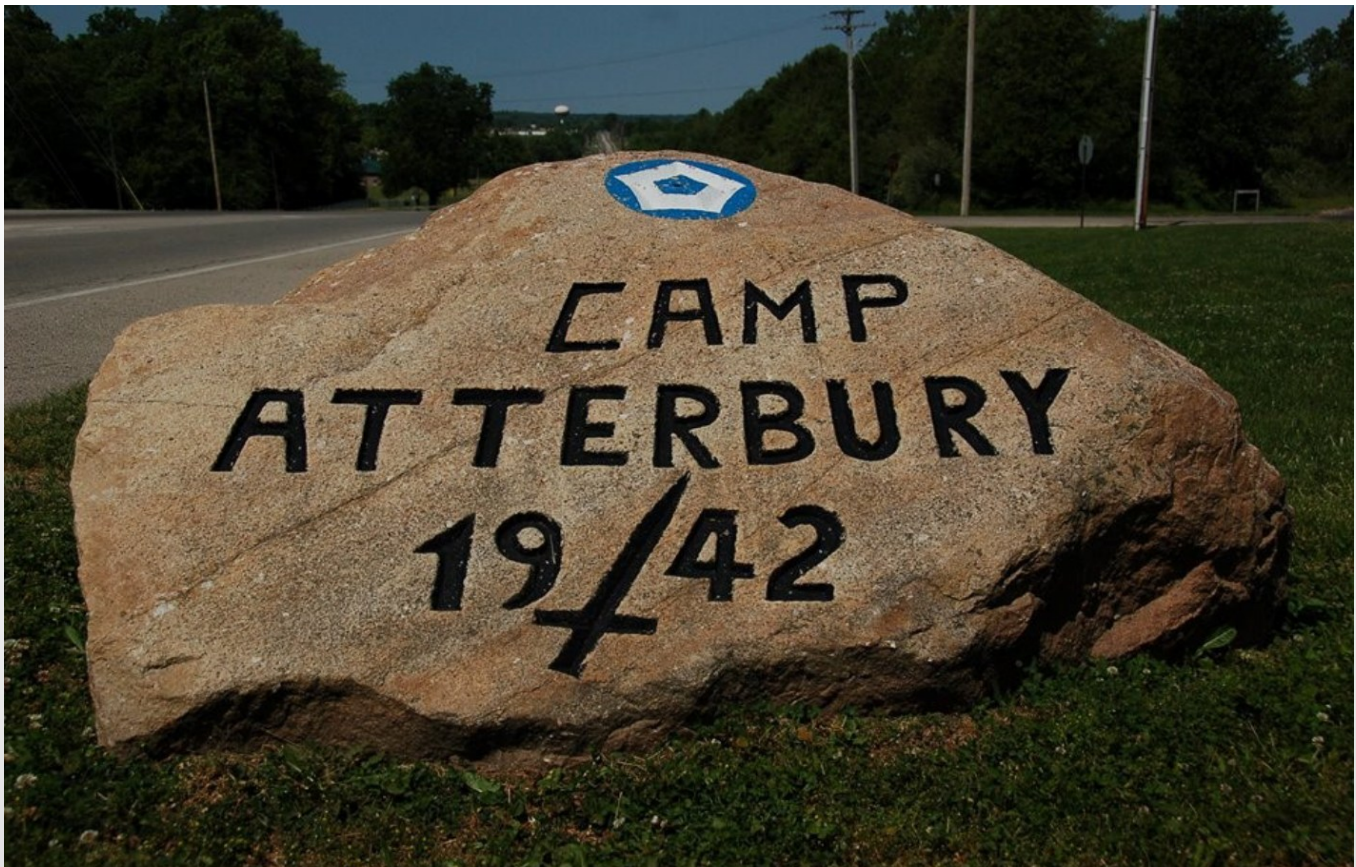
This two day hunt will be conducted using our ZONE format.

Expect to be hunting in a group with a ZONE Leader assisting and coordinating your group's hunt concept. We prefer hunters who can hunt both days. **All participants must be present on 30 NOV to hunt. Arrive no earlier than 8 am on 30 NOV.**

Expect to hunt until the end of legal shooting light on 30 NOV and **check-out no later than 4 pm on 1 Dec.** Hunters must be cleared through the check point / station no later than 4 pm on 1 Dec.

Orange Requirement

This hunt requires hunter orange as described in the General Deer Hunting Guidelines section of this booklet.



Bag Limits

The 2025 firearms deer season bag limit is authorized per the guidelines listed below:

- a. The bag limit for authorized hunters is two deer per hunt, but no more than one antlered deer for the entire deer season.
- b. **All deer harvested on Camp Atterbury must be physically inspected and checked** in on the same day as directed by the hunt staff. Deer will be checked in on-line using the CheckIN Game System. They will also be checked in at the designated check station on Camp Atterbury. Deer check-in procedures will be defined on the morning of the hunt during the hunt safety briefing.

Hunt Control

All firearms deer hunting events will be controlled through INNG Hunting board members and Range Control. Authorized hunters must understand the following:

- a. Authorized hunting hours will be briefed by the hunt staff on the morning of the hunt. Range Control will determine the authorized hunt area each day based on available training areas.
- b. Only selected training areas not utilized by units for training will be designated for hunting.
- c. Designated areas for hunting will be identified by Range Control only.
- d. Personnel found hunting outside the designated hunting areas will be subject to loss of all hunting privileges on Camp Atterbury.

License Requirements

All hunters must have a valid hunting license in accordance with Indiana state law. Military Refuge licenses are authorized on Camp Atterbury during any firearms hunt. Hunters should reference the Indiana Hunting and Trapping Guide for specific licensing requirements. Confirmation of possession of an authorized license will be during the morning hunt safety briefing by the zone leaders.

Authorized For Reserve Firearms Hunt:

- Firearms License (antlered deer only)
- Lifetime Comprehensive Hunting License
- Lifetime Comprehensive Hunting/Fishing License
- Deer License Bundle
- Bonus Antlerless License
- Youth License
- Military Refuge

Legal Equipment

Legal equipment for firearms deer hunts on Camp Atterbury will be shotguns, muzzleloaders and rifles authorized on Indiana public lands. **Hand guns are not authorized** for hunting on Camp Atterbury. Muzzleloaders and rifles must meet requirements as stated in the Indiana Hunting and Trapping Regulations.

Muzzleloader Hunt

13 - 14 DECEMBER 2025

iSportsman Requirement

This hunt requires all hunters to register and purchase a permit as described in the General Deer Hunting Guidelines section of this booklet.

Authorized Hunters

Only persons who have been officially selected and notified through the lottery are an authorized hunter for this event.

Lottery

All hunters must apply for this hunt utilizing the iSportsman lottery system. Details can be found on the Camp Atterbury iSportsman website at:

<https://atterbury.isportsman.net/Lottery.aspx>



Hunt Dates

13-14 December 2025

Check-in for each day of this hunt will be through iSportsman, utilizing a cell phone or a kiosk. Each hunter can reserve their area 24 hours prior to the hunt in iSportsman. Vehicle passes can be printed prior to arrival. Down range gates will open at 0600. **You must check-in to your recreation area within iSportsman before driving down range.** This means you may not be South of County Line Road, West of Schoolhouse Road, East of Mauxferry Road or North of Hospital Road, for the purpose of recreation on Camp Atterbury property, without first checking into the area you plan to recreate in first. Hunters must enter Camp Atterbury through the Main Gate. Do not attempt to go down range until 0600. Range Control will be open and available for emergency calls, but there is not a reason to stop and sign out.

No guests are authorized during this hunt. Only hunters that receive an invitation are authorized to attend

Orange Requirement

This hunt requires hunter orange as described in the General Deer Hunting Guidelines section of this booklet.



Bag Limits

The 2025 firearms deer season bag limit is authorized per the guidelines listed below:

- a. The bag limit for authorized hunters is two deer per hunt, but no more than one antlered deer for the entire deer season.
- b. **All deer harvested on Camp Atterbury must be physically inspected and checked** in on the same day as directed by the hunt staff. Deer will be checked in on-line using the CheckIN Game System. They will also be checked in at the designated check station on Camp Atterbury. Deer check-in procedures will be defined on the morning of the hunt during the hunt safety briefing.

Hunt Control

All firearms deer hunting events will be controlled through INNG Hunt board members and Range Control. Authorized hunters must understand the following:

- a. Range Control will determine the authorized hunt area each day based on available training areas.
- b. Only selected training areas not utilized by units for training will be designated for hunting.
- c. Designated areas for hunting will be identified by Range Control only.
- d. Personnel found hunting outside the designated hunting areas will be subject to loss of all hunting privileges on Camp Atterbury.



License Requirements

All hunters must have a valid hunting license in accordance with Indiana state law. Military Refuge licenses are authorized on Camp Atterbury during any firearms hunt. Hunters should reference the Indiana Hunting and Trapping Guide for specific licensing requirements. Confirmation of possession of an authorized license will be during the morning hunt safety briefing by the zone leaders.

Authorized For Reserve Firearms Hunt:

- Muzzleloader License
- Lifetime Comprehensive Hunting License
- Lifetime Comprehensive Hunting/Fishing License
- Deer License Bundle
- Bonus Antlerless License
- Youth License
- Military Refuge

Legal Equipment

Legal equipment for Muzzleloader deer hunt on Camp Atterbury are muzzle-loaded rifles and shotguns are required to have the minimal barrel caliber of .44" minimum. Bullet diameter is set at .357" minimum. Firearms are to have powder and bullets loaded from the muzzle and shall be single-bullet ones. Saboted bullets are permitted and so are multiple-barreled guns. **Handguns are NOT authorized on Camp Atterbury for hunting.**

Orange Requirement

This hunt requires hunter orange as described in the General Deer Hunting Guidelines section of this booklet.

Management Mission & Objectives

The primary goal of managing the deer herd is to produce a stable deer population that is balanced with the available resources so that the population is healthy. This information should be established from multiple sources, including deer surveys and harvest, as well as recommendations from the scientific literature and the most recent deer research. An additional goal of deer management is hunter satisfaction. By producing a healthy deer population, harvest can be sustained at levels satisfactory to a majority of hunters at Atterbury-Muscatatuck (A-M).

We have identified the following objectives relative to our deer herd and mission:

- Reach and maintain a deer density of 25 deer/mi²
- Reach and maintain a sex ratio of 1 buck: 2 does or better (fewer does)
- Reach and maintain a doe: fawn ratio of 1 doe: 1 fawn or better (more fawns)
- Reach and maintain an average buck harvest age of 3.5 years or greater
- 50% of fawn does reaching and maintaining 70 pounds live weight from November 1 to end of season
- Reach and maintain lactation rates of 30% for yearlings and 70% for adults

CURRENT PROGRESS TOWARDS GOALS

Objective	Status*
Deer density of 25 deer/mi ²	↓
Sex ratio of 1 buck: 2 does or better (fewer does)	↓
Doe: fawn ratio of 1 doe: 1 fawn or better (more fawns)	↓
Average Buck Harvest Age of 3.5 years or greater	↓
50% of Fawn Does at 70lbs Live Weight	↑
Lactation Rates (30% Yearlings, 70% Adults)	↓

*Red arrow: not meeting stated objective

Green arrow: meeting stated objective

Arrow pointing up: closer to stated objective than previous year

Arrow pointing down: further from stated objective than previous year

Why Manage Population Level,

Buck to Doe Ratio and Age Structure

Maintaining a sustainable deer population, consisting of a balanced sex ratio and age structure, provides numerous ecological benefits and contributes to the hunter experience. A balanced population reduces competition for nutrients, which generally leads to better overall health of the individual deer and prevents excessive predation of plants/habitat.

Balancing buck to doe ratios helps synchronize the breeding season. Unbalanced sex ratios can extend the rut, which is extremely stressful for bucks and often leads to excessive weight loss. A shortened rut improves a buck's ability to maintain a healthy weight when entering winter. When sex ratios are unbalanced, does often enter estrous a second or third time before breeding. This results in fawns being born over a longer period, making them more susceptible to predation. It also reduces time available for growth before winter, reducing survival rates. When the sex ratio is balanced, the rut is more intense, shorter and less stressful.

Protecting younger age class bucks will help balance buck to doe ratios and the age structure of the herd. A balanced age structure will reflect natural social hierarchies within the herd and provide improved opportunity to witness mature buck activity. Deer of a healthy herd are likely to have more muscle mass and better antler development.



ATTERBURY-MUSCATATUCK

2025-2026 Hunting, Fishing and Trapping Guide

Whitetail Management

Harvest Data Collection

Biometric harvest data collection began in 2012 and continues to evolve in order to improve both the quantity and quality of the data. High quality long-term data improves the strength of statistical analysis allowing us to make management decisions tailored specifically to Atterbury-Muscatatuck.

For **2025-26**, all harvest data collection will occur at the biological check station located in the Natural Resources Management Complex, Building 843 on County Line Road (see map). Biologists will collect the following data:

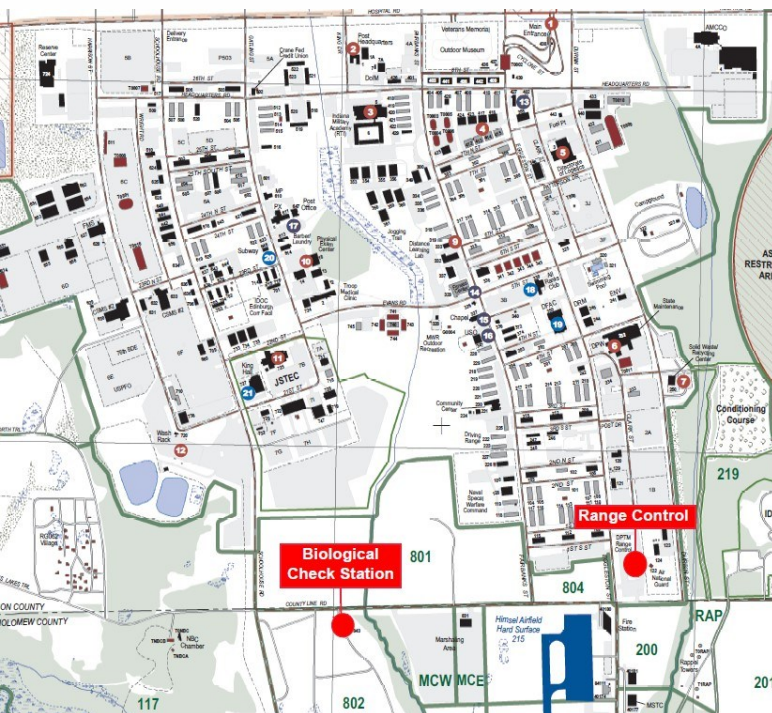
- Sex, Age, Weight
- Antler Morphology (Inside antler spread, main beam length and points)
- Lactation Status of doe (hunters should make note while field dressing).

How You Can Help Achieve

Camp Atterbury's Management Goals

Hunters provide the manpower necessary to implement harvest strategies and provide valuable feedback that helps our biologists manage resources for herd health. Some ways you can help achieve our management goals are:

- Collecting lactation data in the field and reporting it to biologists at the check station.
- Maximizing doe harvest
- Minimizing button buck harvest
- Adhering to antler standards to focus harvest on mature bucks
- Participating in hunter surveys



Check for and Report Lactation Status of Adult Does

We need hunter help to collect lactation data. This can only be effectively checked in the field by the successful hunter prior to or while field dressing the animal. Lactation rates of yearling and adult does can be useful for analyzing trends in deer development and fawn recruitment. Trend data, in conjunction with other data, can indicate possible issues with herd health and predation.

To check for lactation simply squeeze the teats or slice into the udder and check for the presence of milk. Biologists will ask the lactation status of your deer when checking your deer at the Atterbury-Muscatatuck check station.



Camera Survey Data Collection

In addition to the biological and harvest data collected at the check station A-M biologists collect data throughout the year via spotlight, camera trap and other surveys to aid in management decisions.

In 2023 and 2024 A-M Biologists have been conducting trail camera surveys to collect deer density data. A-M is utilizing a distance sampling method that has been used by the IDNR on other restricted access properties. This method uses the distance of a deer from the camera to assess how many deer in the population are represented by that individual. The distance sampling method differs from the more traditional Jacobson, or baited survey method, in some of its statistical assumptions. This allows distance sampling to remain accurate without using bait. With over 50 cameras set up throughout the installation, biologists collect and catalog thousands of images from the full range of habitats and hunt zones to build a robust sample for statistical analysis. When you see these cameras afield, you are seeing research in progress!



Harvesting Mature Bucks, Avoiding Button Bucks and Spikes

Harvesting an appropriate number of deer while limiting the number of immature bucks is necessary to achieve our management goals. Antler standards are one of the most useful tools to limit harvest of antlered deer 2.5 and younger. At Atterbury-Muscatatuck, an average 2.5 year old buck has an average Greatest Inside Antler Spread (GIAS) of **12.8"** and Main Beam Length (MBL) of **17.3"** while 3.5 year old antlered deer present an average GIAS of **14.3"** and MBL of **19.4"**; therefore, using a 15" minimum GIAS or 18" MBL standard will protect a majority of immature bucks while allowing bucks 3.5 years and older to be harvested. Avoiding the harvest of button bucks will help recruit more bucks into the middle age classes (3.5 to 4.5) and balance the herd age structure.

To avoid harvesting immature bucks and button bucks consider the following:

- **Use Binoculars to carefully observe approaching deer**
- Do not shoot until you can compare the inside antler spread to the alert ear position or the tip of the main beam to the nose. Give yourself some cushion!
- Do not shoot at running deer (hasty and unsafe).
- Note the shape of the head, fawns will have a shorter more stubby nose and ears that seem too big for their head. Doe fawns will have a rounded head while a buck fawn's head will appear more flat due to the pedicels (buttons) where future antler development will take place.
- Button bucks are often the first deer to come out so wait for multiple deer to arrive to allow for body size comparison.
- All does and especially mature does are more cautious than button bucks, observe the behavior of the deer.
- During the rut (November) a mature doe will alienate her buck fawn; avoid shooting lone antlerless deer, especially at longer ranges.
- Short antlered spikes (yearlings) may have similarities to the body of a mature doe but careful observation of head shape, degree of muscle development (filled out adult vs lanky teenager) and dominance behavior can provide clues to the deer's sex and age.

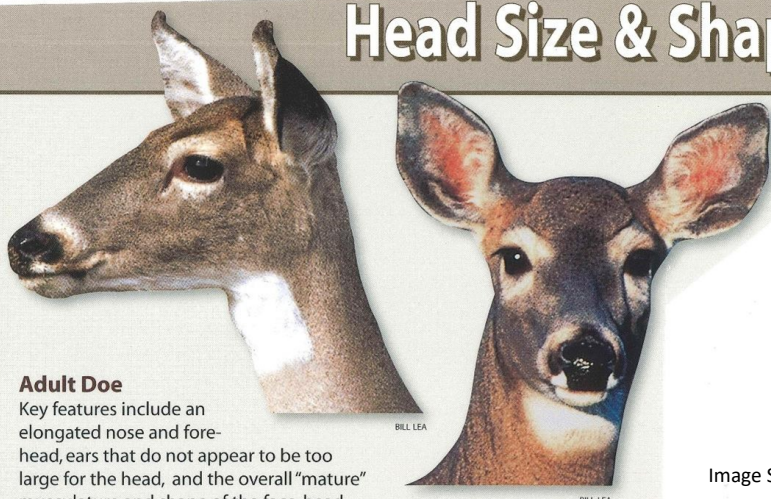


ATTERBURY-MUSCATATUCK

2025-2026 Hunting, Fishing and Trapping Guide

Whitetail Management

Head Size & Shape



Adult Doe

Key features include an elongated nose and forehead, ears that do not appear to be too large for the head, and the overall "mature" musculature and shape of the face, head and neck.

Image Source
QDMA

Yearling/Spike Buck

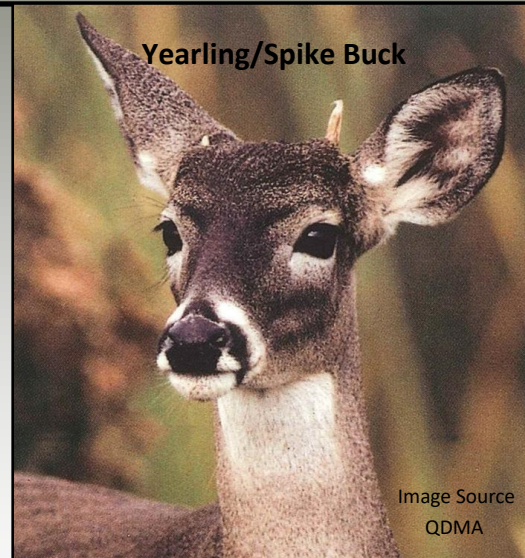


Image Source
QDMA

Hunter Survey

Hunter surveys will continue in 2025- 2026 in order to help INNG gather vital data with the goal of providing a better hunter experience while still meeting management objectives. Current plans are to conduct a pre and post season survey. A link to the surveys will be sent to the email associated with your iSportsman account. Your participation is greatly appreciated and we look forward to hearing from you.



Chronic Wasting Disease Testing — IDNR

As many hunters may know, the Indiana DNR is conducting Chronic Wasting Disease (CWD) testing throughout the state. So far, there have been two reported cases in Indiana. As part of this ongoing monitoring effort, hunters can drop off harvested deer heads for testing at participating IDNR properties. The closest one for hunters at CAIN is the Atterbury Fish and Wildlife Office across the street. Individual hunters can view the test results online once they are complete. No fee is currently being charged for CWD testing of deer with this program. For a full list of locations, hours of operation and further information please visit <https://www.in.gov/dnr/fish-and-wildlife/wildlife-resources/wildlife-diseases-in-indiana/chronic-wasting-disease-cwd/>

Archers Survey (DNR)

Please consider participating in the Indiana DNR's Archers Survey. Observation data from Atterbury-Muscatatuck is analyzed by the DNR and provided to the INARNG as a report. This report in conjunction with other data collection efforts will help managers make informed decisions regarding both Atterbury-Muscatatuck and statewide wild-life populations.

ARCHERS
HELP INDIANA DNR
COLLECT DATA

If you are an archery hunter, sign up for the Archer's Index and report your wildlife observations while afield.

- Sign up anytime
- Data is collected from October 1 to the day before the firearms season
- Easy to participate

The data you help collect will be used to:

- Create observation trends
- Calculate fawn:doe and buck:doe ratios

DNR To learn more or sign up, see on.IN.gov/archersindex
Indiana Department of Natural Resources

2025 Antler Standards

Antlered deer eligible for harvest on Atterbury-Muscatatuck will meet one or more of the following criteria

1. Inside antler spread of ≥ 15 inches.
2. One main beam with a length ≥ 18 inches.
3. Determined to be 3.5 years or older by independent lab analysis utilizing the cementum annuli technique (A-M biologists will collect and ship all samples for laboratory analysis)

Failure to adhere to this policy may result in reduced or restricted hunting privileges.

Spikes & Button Bucks

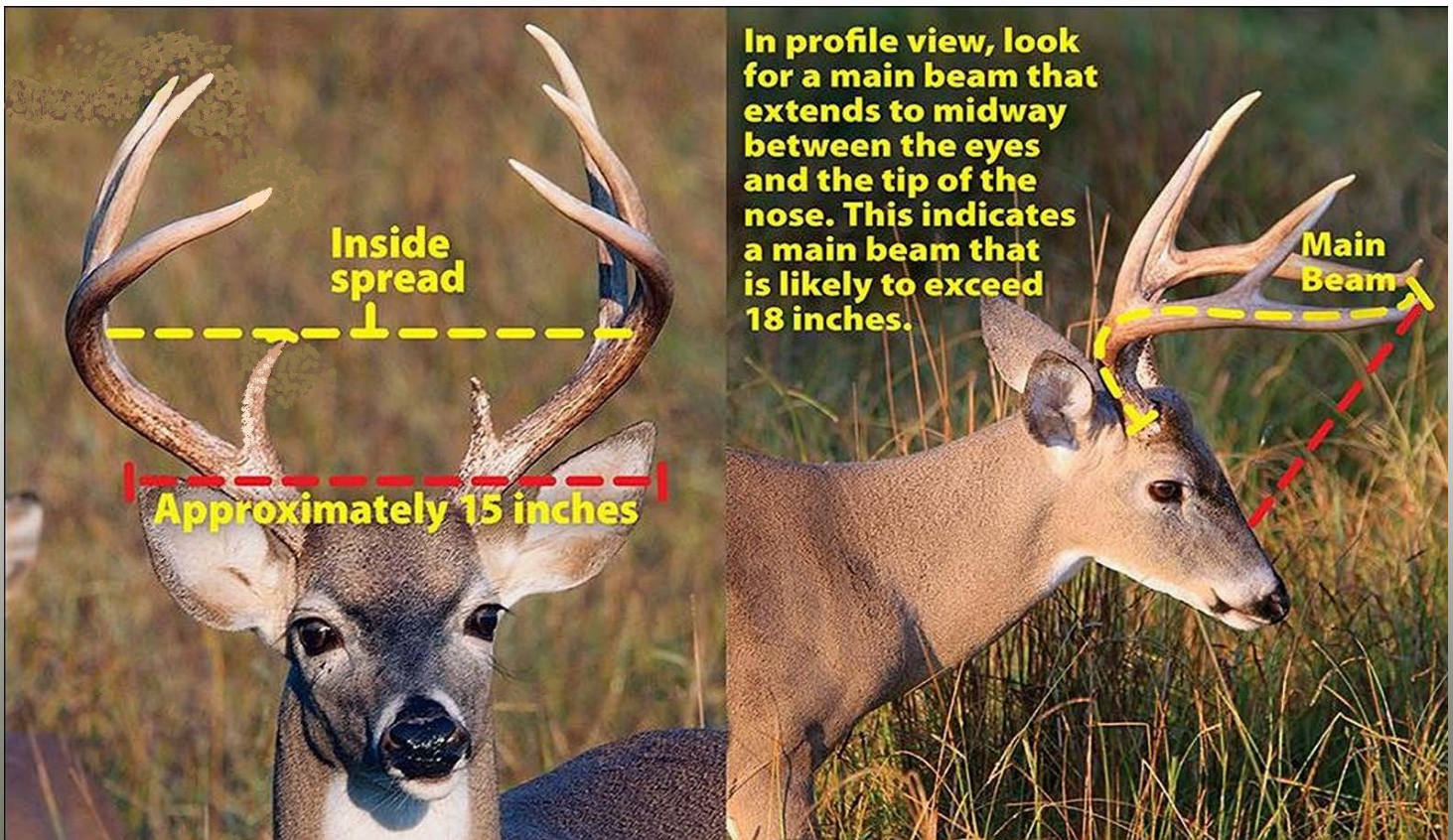
“Spike” deer with one antler ≥ 3 inches are considered antlered deer and are subject to the antler standard policy.

Antler Standards Goals

A-M antler standards have been designed to protect younger age class deer (less than 3.5 years) to allow them to mature and reach their full potential. The standards in place have been developed using data collected from deer harvested from A-M to ensure they are relevant to the local herd.

Antler Standards support the following management goals:

- a. Increase the buck-to-doe ratio to as close as 1:2 as possible.
- b. Diversify age structure so the average harvested male deer is ≥ 3.5 years old.
- c. Shorten duration of the primary rut to reduce stress on bucks.
- d. Condense fawning season to reduce effects of predation and reduce late season births.
- e. Increase opportunities to witness mature buck activity.
- f. Improve the quality of the hunt.



Antler Standards Background

A key aspect of the INNG deer herd management strategy involves protecting younger age class antlered deer. To achieve this a 4-point (on one side) antler standard was implemented in 2012 to encourage the harvest of older age class antlered deer. In 2017 a 15-inch antler spread standard was added to better protect 2.5-year-old antlered deer that met the 4 point on one side rule (young 8 and 10 point deer). 2018 was the first year antler standard consequences began to be formally enforced in accordance with policy.

Genetics, nutrition or injury can all play a role in antler development that result in mature bucks ≥ 3.5 years of age not obtaining 4 points on a side or an inside antler spread of ≥ 15 inches. In 2022 an alternative standard of main beam length ≥ 18 inches was added. This metric was developed based on data collected from deer harvested at A-M to target deer meeting age class goals. Also beginning in 2022 any deer determined to be ≥ 3.5 years by independent laboratory analysis was not subject to consequences. By adding lab age as a standard, hunters will not be penalized for harvesting mature bucks that have poor antler quality or have declined due to age. In light of these changes, the 4 points on a side standard was determined unnecessary and removed in 2022.



Antler Standards Compliance

We understand the antler standards can be restrictive and we ask hunters to be patient and give their best effort to adhere to this requirement. Biometrics will be collected from all harvested deer by Camp Atterbury biologists as part of the sign-out process.

All antlered deer standard violations will be formally reviewed by the INNG Hunting Program Board. Any loss of hunting privileges will be determined by majority vote by the Hunting Program Board IAW published policy. Official notification of any loss of privilege will be provided to the accused and written record will be maintained by the INNG Hunting Program Manager.

Violators who attempt to avoid consequences by abandoning deer in the field (Wanton Waste) or by hiding deer during the sign-out process will be subject to permanent loss of all hunting privileges.

Antlered Deer Standards Policy Violation Consequences

Policy deviations may be penalized. Penalties escalate relative to the severity of the deviation. Penalized hunters will receive written notification. Penalties for policy deviations are as follows:

- A. Inside spread 13"-14.9" – Probation for the following hunting year.
- B. Inside spread 11"-12.9" – No antlered deer during the following hunting year.
- C. Inside spread less than 11" – No antlered deer during the following two hunting years.
- D. Additional antler standard violations while on probation – same as penalty as C.
- E. Main beam length ≥ 18 " – No consequences
- F. Lab verified age ≥ 3.5 – No consequences

It is important to note, a hunter that has lost their antlered deer privileges may still harvest antlerless deer.

Youth and Wounded Warrior Hunters are encouraged to follow the antler standards, but will not be penalized.

ATTERBURY-MUSCATATUCK

2025-2026 Hunting, Fishing and Trapping Guide

Spring Turkey Hunting

ISportsman Requirement

This hunt requires all hunters and guests to register and purchase a permit as described in the General Hunting Guidelines section of this booklet.

***Dates subject to change. Please see Atterbury.isportsman.net for dates**

Hunt Name	Hunt Date
Camp Atterbury YOUTH Spring Turkey Season	18 - 19 Apr 2026*
Camp Atterbury WOUNDED HERO Spring Turkey Hunt	16 - 19 Apr 2026*
Camp Atterbury Spring Turkey Hunting Season	22APR - 10May 2026*

Authorized Hunters/Guests

Spring turkey hunting is limited to one hunter per hunting area. An authorized hunter may be accompanied by one, non-hunting guest. An authorized hunter or an authorized hunter with a guest are considered to be one hunt team. No more than 30 hunt teams will be authorized to hunt turkey on any one day during the Spring Turkey Season.

An authorized spring turkey hunter will be allowed to bring one non-hunting guest during their daily hunt. Guest are not authorized to harvest a turkey during the Spring season. Guests are not allowed to carry a weapon, but can guide, call, or film and are encouraged for enhanced safety. Guests must sign-in with and be escorted by the authorized hunter at all times. Hunters and guests must possess a valid Indiana turkey hunting license per Indiana regulations. The authorized hunter holds the responsibility to explain the Atterbury-Muscatatuck rules and regulations to their guests and maintain accountability of their guest's actions. The authorized hunter and guest will both be accountable for any policy violation committed by their guest.

Permits for Spring Turkey Hunting

Permits can be purchased by authorized hunters in their iSportsman account when available. Permits normally become available in February. Permits can be purchased through the last day of the Spring turkey season. Area reservations can be made starting at noon on the day prior to any hunt day. No more than 30 hunt teams can hunt on any given day of the season. A hunt team may not sign-in/sign-out more than 3 times in a single hunt day.

Application processes for Youth and Wounded Hero Spring Turkey Hunts are detailed in the Youth and Wounded Hero Turkey Hunt section of this guide.

Standby Hunting Availability

Atterbury-permit holding hunters can sign-in no earlier than 0500 hrs daily and until 30 teams have signed-in directly or by reservation. Unfilled reservations will be released at 0600 hrs daily and become available as a first come first serve basis. Unfilled reservations will remain available for the day until 30 teams have signed-in. Once 30 teams have signed-in, no additional sign-ins will be authorized.



Bag Limits and Harvest Reporting:

One bearded turkey IAW state guidelines. Turkey harvested on Atterbury-Muscatatuck count against an individual's state bag limit.

All turkeys harvested on Camp Atterbury must be checked in using the IDNR's on-line CheckIN Game System, recorded at the harvest check station on Camp Atterbury, and entered into iSportsman during the hunter check-out process.

Hunt Control

Spring turkey hunting access will be managed by Range Control. Authorized hunters must understand the following:

- Hunting hours and access are subject to change at any time. Range Control will determine the authorized hunt zones based on available training areas and a daily hunt map will be published on iSportsman.
- Personnel found hunting outside the designated hunting areas will be subject to loss of all hunting privileges on Camp Atterbury.
- Range Control has the authority to close any training area without advanced notice to promote safety. This includes training areas occupied by one or more hunters in order to allow a safe hunt.
- All hunters and Guests shall have a valid Indiana turkey license and Atterbury permits while turkey hunting on Atterbury or Muscatatuck.



Hunting Procedures:

Range Control must ensure accurate accountability of all hunters at all times. Users of Camp Atterbury shall ensure Range Control is aware of their location. An iSportsman check-in confirmation meets this requirement. Spring turkey hunters and guests will abide by the following procedures when hunting on Camp Atterbury:

- Sign-in for hunting using the Atterbury iSportsman portal no earlier than 0500. Non-hunting guest must be checked-in by the accompanying authorized hunter by entering the guests name and birth date during their check-in process.
- Hunters will determine available hunting areas by using the Area Status Map, found in the Maps section of iSportsman. Hunters may select one or two three-digit training areas.
- Place your vehicle pass on the dashboard of your hunting vehicle so the entire pass is legible from outside the vehicle. You must print your vehicle pass from your iSportsman account. Vehicle pass information must correctly reflect using hunter and vehicle information (i.e., make, model, license plate).
- Take the most direct route to your hunting area. Park in a safe manner that does not impede other traffic and indicates to which direction from a road you will be hunting.
- Carry a functioning cell phone at all times afield.
- You may change your hunting area(s) no more than two times per day after your initial check-in. You may not enter a new area without receiving an iSportsman check-in confirmation for that area.
- Return to the Atterbury cantonment area at the completion of your hunt and prior to completing your final iSportsman check-out for the day.
- Record harvested turkey at the Atterbury check station and in conjunction with your iSportsman check-out. Requires IDNR confirmation number.
- Do not leave Camp Atterbury while checked-in for hunting. Leaving Camp Atterbury while checked-in for hunting may result in a loss of hunting privileges.

Youth and Wounded Hero Turkey Hunt Specific Guidance

Camp Atterbury will host a Youth Turkey Hunt.

a. Youth Turkey Hunt is by application only (see application form at <https://www.in.gov/indiana-national-guard/visitor-information/hunting-and-fishing-program>) no later than 31 March. Notification of selection will be sent by email prior to the hunt.

(1) Limited to 30 Youth hunters per day.

(2) Priority will be military member dependent, retired military dependent, Indiana National Guard civilian employee dependent, military member relative, then other applicants as space is available.

b. Wounded Hero Turkey Hunt is an invitation only turkey hunt. The hunt focuses on veterans that have been wounded in combat. The hunt requires all participants to go through an application process. To receive an application send an email to ng.in.inarng.mbx.hunting-program@army.mil titled "Wounded Hero Hunt".



Policy Violations

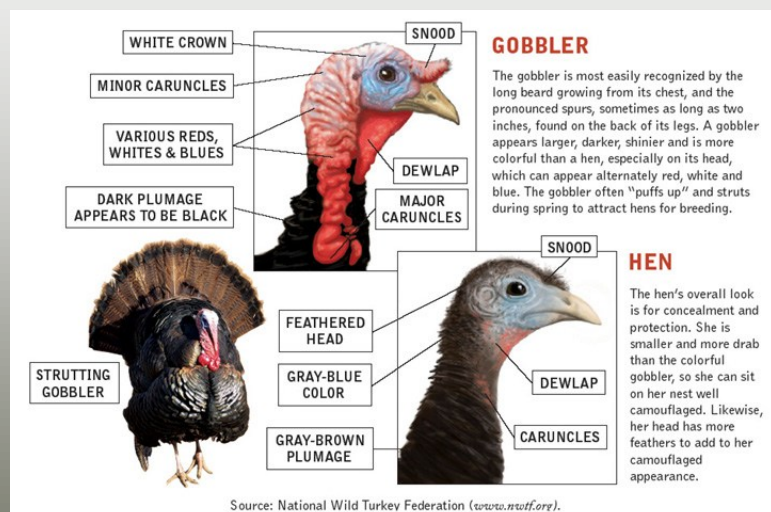
Hunters are obligated to report any policy violations to Range Control. Violations of this policy may result in loss of hunting privileges. Military members who fail to follow the applicable rules described herein are in violation of Article 92 of the UCMJ and subject to administrative and/or punitive action. Authorized hunters will ensure their guests understand and adhere to this policy. Authorized Hunters will be held accountable for their guests' actions; including policy violations and consequences. Any violation of Indiana or federal game laws, whether on or off post, may also result in suspension of hunting privileges. Authorized hunters are required to notify the INNG Hunt Board of any wildlife violation off post. Policy violations will be formally reviewed by the INNG Hunting Program board. Any loss of hunting privileges will be determined by a simple majority vote by the Board. Hunters in violation of this policy will receive written notification from the Board.

License Requirements

Hunters must possess valid hunting license/permit/stamp in accordance with Indiana state law, and applicable Atterbury permits.

Legal Equipment

Legal equipment for this hunt is IAW Indiana Regulations.



Mushroom Hunting

Authorized Mushroom Hunters

Mushroom hunting opportunities on Camp Atterbury will be limited to the following authorized personnel: Military, Retired Military, State and Contracted Employees of Atterbury-Muscatatuck, and Command Directed personnel. Authorized personnel will limit guests to three or less. Guests are authorized to mushroom hunt only if escorted by an authorized hunter at all times.

Authorized Mushroom Hunting Dates

Mushroom hunting on Camp Atterbury will be authorized 01 April thru 30 September.

Hunt Control/Sign In/General Guidance

Mushroom hunting access is managed by range control and tracked by iSportsman. You must follow the below steps to hunt mushrooms on Camp Atterbury.

Log into the Camp Atterbury iSportsman website to review Training Areas available for mushroom hunting. See the How-To-Purchase-Atterbury-Permits job aide found on the Atterbury iSportsman home page. This process requires visiting BLDG 241 during normal business hours.

- Select one three-digit Training Area and complete the digital check-in process.
- You will receive a check-in confirmation notification from the iSportsman platform when you have successfully completed the digital check-in process. Printing or capturing a screen shot of your confirmation is recommended.
- Display your vehicle pass on the dashboard of your vehicle making it legible from outside the vehicle and proceed directly to your designated Training Area. Vehicle pass information must correctly reflect using hunter and vehicle information (i.e., make, model, license plate).
- Mushroom hunters are not authorized to check-in if they do not intend to hunt immediately. Military members and Civilian employees of the INNG are not authorized to be checked-in for mushroom hunting while performing official duty.

- Mushroom hunters must have a functioning cell phone on their person while hunting on Camp Atterbury.
- Mushroom hunters have the ability to change their designated Training Area during the day. Mushroom hunters must first check-out of their designated Training Area and then check-in to a new, available Training Area. All check-in and check-out will be completed in the Atterbury-Muscatatuck iSportsman website.
- Mushroom hunters are not authorized to enter a Training Area without a corresponding confirmation notification from the iSportsman platform for that Training Area.
- Return to the Atterbury cantonment area at the completion of your hunt and prior to completing your final iSportsman check-out for the day.
- Personnel found mushroom hunting outside their designated hunting area are subject to loss of privileges on Camp Atterbury IAW CA 210-1.

Policy Violations

Hunters are obligated to report any policy violations to Range Control. Violations of this policy may result in loss of hunting privileges. Military members who fail to follow the applicable rules described herein are in violation of Article 92 of the UCMJ and subject to administrative and/or punitive action. Authorized hunters will ensure their guests understand and adhere to this policy. Authorized Hunters will be held accountable for their guests' actions; including policy violations and consequences. Any violation of Indiana or federal game laws, whether on or off post, may also result in suspension of hunting privileges. Authorized hunters are required to notify the INNG Hunt Board of any wildlife violation off post. Policy violations will be formally reviewed by the INNG Hunting Program board. Any loss of hunting privileges will be determined by a simple majority vote by the Board. Hunters in violation of this policy will receive written notification from the Board.



Authorized Hunters

Small game/bird hunting opportunities on Atterbury-Muscatatuck will be limited to the following authorized personnel: Military (requires current military ID), Retired Military (requires current military retiree ID), State and Contracted Employees of the Indiana National Guard (requires Adjutant General's Office state ID), and Command Directed personnel. Guests are authorized but must be escorted at all times and must be checked in on iSportsman.

Check-In and Check-Out Procedures

Small game/bird hunting is controlled by range control and tracked by iSportsman. Hunting is allowed seven days a week when installation availability exists. To hunt on Atterbury-Muscatatuck you must follow the below steps:

Log into the Atterbury-Muscatatuck iSportsman website to review Training Areas available for small game/bird hunting. See the How-To-Purchase-Atterbury-Permits job aide found on the Atterbury-Muscatatuck iSportsman home page. This process requires visiting BLDG 241 during normal business hours.

- Select Training Area and complete the digital check-in process.
- You will receive a "check-in" confirmation notification from the iSportsman platform when you have successfully completed the digital check-in process.
- You must print your validation/permits page from iSportsman to display as your vehicle parking pass as indicated in the "General Hunting Guidelines" section of this publication (no requirement to stop at Range Control).
- Display your vehicle pass on the dashboard of your vehicle in a manner visible/readable from outside of the vehicle and proceed directly to your designated Training Area.
- Hunters must have a functioning cell phone on their person while checked-in for hunting on Camp Atterbury.
- Hunters are not authorized to check-in if they do not intend to hunt immediately. Military members and Civilian employees of the INNG are not authorized to be checked-in for hunting while performing official duty.

- Hunters have the ability to change their designated Training Area during the day. Hunters must first check-out of their current Training Area and then check-in to a new, available Training Area. All check-in and check-out will be completed in the Atterbury-Muscatatuck iSportsman portal.
- Hunters are not authorized to enter a Training Area without a confirmation notification from the iSportsman platform for that Training Area or specific authorization from Range Control if the iSportsman platform is offline.
- Range Control is authorized to deviate check-out time due to operational requirements.
- Personnel failing to meet the sign-in, sign-out, or to display a parking pass are subject to penalties as defined in the CA REG 210-1 (Atterbury-Muscatatuck Hunting, Fishing Trapping Regulation and Procedures).
- Personnel found hunting outside their designated area are subject to loss of privileges on Atterbury-Muscatatuck.

Small Game/Bird Hunting Group Control

Small game/bird hunting such as rabbit hunting may be conducted with prior coordination from Range Control. Groups must all be checked into the same training area.

Small Game Hunting Regulations

Small game/bird hunters on Atterbury-Muscatatuck must follow all Indiana State Hunting Regulations to include licensing and reporting procedures. Please see the Indiana Hunting and Trapping Guide for further information.



Small Game/Bird Hunting Restrictions

Small game/bird hunting will not be allowed during special deer hunts. Those special hunt dates are located below.

Small game/bird/furbearer hunting with dogs is not allowed until 15 December, when the Atterbury-Muscatatuck deer seasons have ended.

Hunt Name	Hunt Date
Special Youth Firearms Hunt	27- 28 Sept 2025
Volunteer Appreciation Hunt	11- 12 Oct 2025
Wounded Hero Hunt	23- 26 Oct 2025
Indiana National Guard Invitation Hunt	7- 8 Nov 2025
Military Reservation Firearms Hunt	29- 30 Nov 2025
Muzzleloader Hunt	13-14 Dec 2025

Guests

Small game/bird hunters are authorized 3 guests per day while hunting on Camp Atterbury. If hunting as a group, you must notify range control. Refer to iSportsman section of this guide for guest iSportsman requirements.

Legal Weapons For Small Game/Bird Hunting

See Indiana Hunting Regulations.

Night Hunting

Night hunting may be approved on a case by case basis for Raccoon and Coyote based on Range Control availability. Night hunting is at the discretion of Range Control and must be coordinated prior to signing into iSportsman.

Hunter Education For Small Game/Bird Hunting

All hunters must be validated in iSportsman with a copy of their hunter education card, regardless of age. There is no exception to this policy.

Orange Requirement During Small Game/Bird Hunting

Two pieces of hunter orange must be worn while hunting/trapping during any season that requires hunter orange to be worn by state law.

Hunters will wear a minimum of a hat/head cover and vest/coat. Two pieces of fluorescent orange must be worn by hunters at all times once they enter the installation main gate.

If hunting as a group, you are required to wear two pieces of orange at all times regardless of season.

Violators of this policy may be asked to leave immediately and may be subject to additional loss of recreational privileges.



Dog Running/Training

A new post season for dog running/training has been established. This season will run concurrent with hunting season, however will continue until April 15th each year. This season is meant to provide hunters with an extended season to train with their dogs without affecting wildlife populations.

During dog running/training season the owner must obey all hunting season dates and bag limits. Once the season has ended the dog owner must not be in possession of a firearm while running/training with the dog.

Check-in and Check-out procedures will remain the same within iSportsman for dog running/training as it does for hunting with dogs.

Requirements for the Use of Dogs While On Atterbury-Muscatatuck

Dogs must be collared or chipped with owner information.

It is highly recommended to utilize GPS connected tracking devices on dogs while hunting on Atterbury-Muscatatuck, however it is not currently a requirement.

Prior coordination to use dogs while hunting/running/training may be required on a case by case basis due to training, maintenance schedules, and/or the availability of Range Control personnel during off peak seasons.

Hunting With Dogs

Hunting with dogs is not authorized until 15 December, when all scheduled Atterbury-Muscatatuck deer seasons have ended.

Small game/bird hunting with dogs is authorized on Atterbury-Muscatatuck. Dog owners are responsible for their dogs at all times. At no time are you authorized to follow, look for, or track a dog into a closed training area or the impact area. If a dog becomes lost from the party or crosses into a closed training area, the dog owner will immediately contact Range Control for assistance in retrieving the dog.

Hunting with dogs for Coyote and Deer is strictly prohibited.

Hunting with dogs from a truck, such as squirrel or racoon hunting is approved as long as you are signed-in for the training area in which the dog(s) is hunting. During such hunting methods, all firearms will be unloaded and sheathed while the vehicle is moving and remain as such until the dog(s) is treed.

Dates for use of Dogs

Squirrel and Racoon: Dec. 16, 2025– Jan. 31, 2026

Rabbit: Dec. 16, 2025- Feb. 28, 2026

Running Season: Dec. 16, 2025– Apr. 15, 2026



Trapping

Authorized Trappers

Refer to the Hunter Information section, “**Personnel Authorized To Hunt On Camp Atterbury**” header for full description of authorized users.

Authorized trappers may bring one (1) guest trapper per day. Guests must adhere to the guidelines described in the Hunter Information section.

Sign In/General Guidance

Trappers will check into Training Area 802 only and must submit a map of their trap locations to the hunting program email.

Trapping Regulations

Trappers on Camp Atterbury must follow all Indiana State Trapping Regulations to include licensing and reporting procedures. Please see the Indiana Hunting and Trapping Guide for further information.

Trapping Restrictions

Trappers on Camp Atterbury may not set traps, check traps or pull traps during any scheduled special hunt. Those dates follow:

All traps must be tripped or pulled during these dates.

Hunt Name	Hunt Date
Special Youth Firearms Hunt	27-28 Sept 2025
Volunteer Appreciation Hunt	11-12 Oct 2025
Wounded Hero Hunt	23-26 Oct 2025
Indiana National Guard Invitation Hunt	7-8 Nov 2025
Military Reservation Firearms Hunt	29-30 Nov 2025
Muzzleloader Hunt	13-14 Dec 2025

Snaring

Snaring on Camp Atterbury is authorized without written permission, however, all Indiana rules and regulations concerning snaring apply while on Camp Atterbury.

Hunter Education For Trapping

All trappers must be validated in iSportsman with a copy of their hunter education card, regardless of age. There is no exception to this policy.

Guests

Trappers are authorized one guest per day while trapping on Camp Atterbury. Guests may not set, check or pull traps alone at any time. The trapper and guest must be in the same vehicle while setting, checking or pulling traps.

Legal Weapons For Trapping

While trapping on Camp Atterbury only rifles chambered in .22 cal. and smaller are authorized. Camp Atterbury does not allow the use of hand guns for trapping.

Orange Requirement During Trapping

Two pieces of hunter orange must be worn while hunting/trapping during any season that requires hunter orange to be worn by state law. Hunters will wear a minimum of a hat/head cover and vest/coat. Two pieces of fluorescent orange must be worn by hunters at all times once they enter the installation main gate. Violators of this policy may be asked to leave immediately.

Trapping Control

All trap lines will be coordinated with Range Control utilizing a map that shows the route the line will be placed on. The map should include each traps general location and should be updated daily as traps are added and removed. Use of the Trapping Tool under the maps tab of the iSportsman portal is recommended.

Trappers should be prepared to trip or remove traps within 24 hours of notice of a new training request in a training area where the trapper has traps.

ATTERBURY-MUSCATATUCK

2025-2026 Hunting, Fishing and Trapping Guide

Waterfowl Hunting

Authorized Hunters

Refer to the Hunter Information section, “**Personnel Authorized To Hunt On Camp Atterbury**” header for full description of authorized users.

Authorized waterfowl hunters may bring one (1) guest hunter per day. Guests must adhere to the guidelines described in the Hunter Information section.

Sign In/General Guidance

Refer to the General Hunting Guidelines section for information on ISportsman, signing in/out of hunting areas, driving on post, reporting harvest and other requirements.

License requirements , Stamps and HIP

All waterfowl hunters 15 years of age and younger must have:

- Indiana youth hunting license
- Harvest Information Program (HIP) validation number

All waterfowl hunters 16 to 17 years of age and older must have:

- Indiana youth hunting license
- Harvest Information Program (HIP) validation number
- Federal duck stamp

All waterfowl hunters 18 years of age and older must have:

- Indiana hunting license
- Harvest Information Program (HIP) validation number
- Federal duck stamp
- State waterfowl stamp

Harvest Information Program (HIP) validation number can be obtained by registering at on.IN.gov/INhuntfish at the end of registration the HIP number will be assigned. Hunters must record this number on their license.

Waterways available for waterfowl hunting

All waterways available to hunt waterfowl on Camp Atterbury will be displayed on iSportsman on the daily hunt map.

Non-Toxic shot

A list of Non-Toxic shot can be found in the Indiana hunting and trapping guide. It is a requirement to follow the guidance on the type of Non-Toxic shot allowed in Indiana to waterfowl hunt on Camp Atterbury and Muscatatuck.

Motorboat use for Waterfowl Hunting

Motorboats with electric trolling motors are authorized to be used for waterfowl hunting on Camp Atterbury and Muscatatuck. The Indiana hunting and trapping guide provides specific guidance on the use of motorboats for waterfowl hunting. Anyone using a motorboat for waterfowl hunting will follow the regulations found in the Indiana hunting and trapping guide or may lose hunting privileges on the installation. See Boat Usage on page 53 of this guide to understand the Camp Atterbury requirements for usage of watercraft on the installation.

Hunting hours for Waterfowl hunting

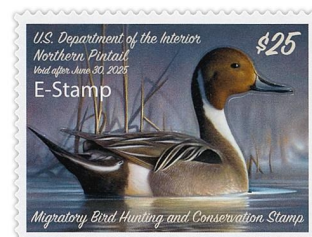
Hunting hours are from 0600 to sunset. Range Control has the authority to provide access to areas for waterfowl hunting based off of military operations. Coordination will be made through the Range Control Safety Officer for access outside the designated times for waterfowl hunting.

Use of retrieving dogs

Dogs are authorized on Camp Atterbury and Muscatatuck for use to retrieve waterfowl while waterfowl hunting. Authorized hunters must request permission 72 hours prior to arrival by sending an email to the Indiana Army National Guard hunt board at ng.in.inarnng.mbx.hunting-program@army.mil.

Waterfowl Hunting Seasons and Bag Limits

Waterfowl and migratory bird seasons and bag limits can be found in the Indiana Hunting and Trapping Guide or at this link <https://www.in.gov/dnr/fish-and-wildlife/hunting-and-trapping/waterfowl-and-migratory-game-birds/migratory-gamebird-seasons-and-regulations/> . Please review prior to arriving on Camp Atterbury.



Fishing

Personnel Authorized to Fish

Fishing opportunities on Camp Atterbury will be limited to the following authorized personnel: Military, Retired Military, State and Contracted Employees of the Indiana National Guard, and Command Directed personnel. Guests are authorized but must have a validate iSportsman account and be escorted at all times.

Authorized Fishing Dates

Fishing is authorized year round on Camp Atterbury, but limited to only those areas that are not closed due to training.

Hunt Control/Sign In/General Guidance

Fishing is controlled by range control and tracked by iSportsman. To fish on Camp Atterbury you must follow the below steps.

Log into the Camp Atterbury iSportsman website to review Training Areas available for fishing. See the How-To-Purchase-Atterbury-Permits job aide found on the Atterbury iSportsman home page. This process requires visiting BLDG 241 during normal business hours.

- a. Select one three-digit Training Area and complete the digital check-in process.
- b. You will receive a “check-in” confirmation notification from the iSportsman platform when you have successfully completed the digital check-in process.
- c. Display your vehicle pass on the dashboard of your vehicle in a manner visible/readable from outside of the vehicle and proceed directly to your designated Training Area. (information on vehicle passes can be found in the “Important Updates” section of this publication, there is no requirement to report to Range Control).

d. Fisherman are not authorized to check-in for fishing if they do not intend to fish immediately. Military members and Civilian employees of the INNG are not authorized to be checked-in for fishing while performing official duty.

e. Fisherman must have a functioning cell phone on their person while checked-in for fishing on Camp Atterbury.

f. Fisherman have the ability to change their designated Training Area during the day. Fisherman must first check-out of their designated Training Area and then check-in to a new, available Training Area. All check-in and check-out will be completed in the Atterbury-Muscatatuck iSportsman website.

g. Fisherman are not authorized to enter a Training Area without a confirmation notification from the iSportsman platform for that Training Area or specific authorization from Range Control if the iSportsman platform is offline.

h. Personnel found fishing outside their designated area are subject to loss of privileges on Camp Atterbury.

Fishing Requirements

- a. No parking on lake dams or grass areas.
- b. All ponds, lakes, rivers, and streams are off limits for swimming, bathing, or wading. Wading is permitted when fishing only.
- c. No person may have more than three (3) rods or poles in use at any one time.
- d. Fish may not be taken at any time by any method other than hook and line attached to a rod or pole in managed waters on the Installation.
- e. All participants must have all applicable state/federal licenses and stamps in addition to a Camp Atterbury iSportsman fishing permit.

Magnet Fishing

Magnet fishing is NOT authorized on Atterbury-Muscatatuck.

Fishing

Fishing Hours

Fishing opportunities on Camp Atterbury will be from 0600-2100 daily. Any access outside these hours will be coordinated and approved by Range Control only.

Size and Bag Limits

While fishing on Camp Atterbury, Indiana DNR size and creel limits will apply. See IDNR fishing regulations guide for current requirements at www.in.gov/dnr/fish-and-wildlife/fishing/fishing-guide-and-regulations/



Boat usage

- Boats, to include canoes and kayaks, with electric trolling motors are allowed on all lakes for fishing purposes.
- Outboard combustion motors are not authorized on the Installation.
- All vessels must be registered in accordance with Indiana laws.
- Boats used on the Installation must be equipped with at least one life preserver for each person aboard.
- Children under 12 and non-swimmers aboard will wear life preservers at all times.

f. All boats must be cleaned and dry prior to entering Camp Atterbury waters to prevent the spread of aquatic invasive species.

g. Operating a boat in a reckless or negligent manner, which may endanger the life limb, or property of any person, is prohibited.

Policy Violations

Personnel are obligated to report any policy violations to Range Control. Violations of this policy may result in loss of privileges. Military members who fail to follow the rules described in this memo are in violation of Article 92 of the UCMJ and subject to administrative and/or punitive action. Authorized persons will ensure their guests understand and adhere to this policy. Authorized persons will be held accountable for their guests' actions to include policy violations and consequences. Any violation of Indiana or federal fish and game laws, whether on or off post, may also result in suspension of privileges. Authorized persons are required to notify the INNG Hunt Board of any wildlife violation off post. Policy violations will be formally reviewed by the INARNG Hunting Program board. Any loss of privileges will be determined by a simple majority vote by the Board. Personnel in violation of this policy will receive written notification from the Board.

